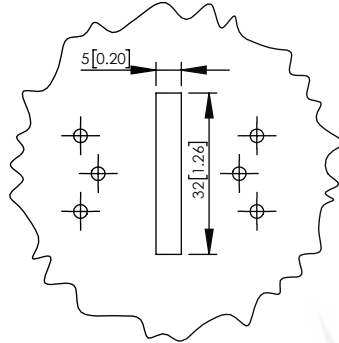
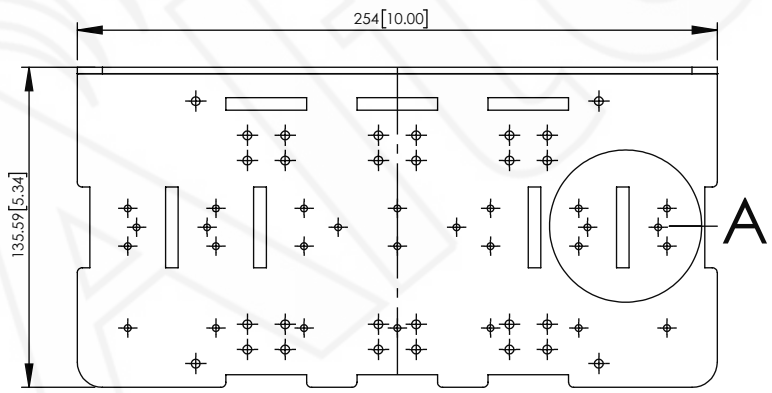
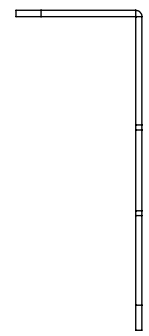
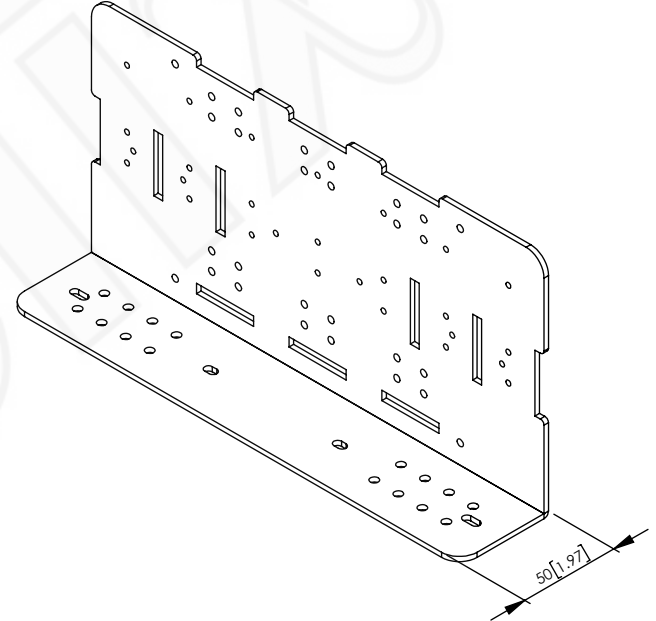
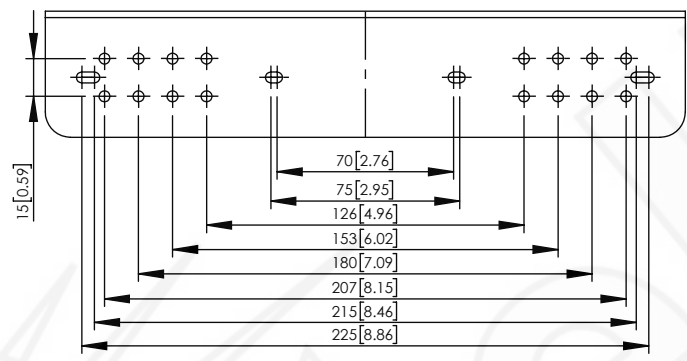


REV	DATE	DESCRIPTION
A	08/18/23	INITIAL RELEASE

THE INFORMATION CONTAINED IN THIS DRAWING IS THE SOLE PROPERTY OF ALTELIX LLC. ANY REPRODUCTION IN PART OR WHOLE WITHOUT THE WRITTEN PERMISSION OF ALTELIX LLC IS PROHIBITED. ALL SPECIFICATIONS SUBJECT TO CHANGE WIHTOUT NOTICE. (C) 2019 ALTELIX LLC.



DETAIL A



NO.	DESCRIPTION	MATERIAL	FINISH	QTY.
8	-	-	-	-
7	-	-	-	-
6	-	-	-	-
5	-	-	-	-
4	-	-	-	-
3	-	-	-	-
2	-	-	-	-
1	2.5mm Plate	Aluminum	Sandblasted	1

UNLESS OTHERWISE SPECIFIED:
 DIMENSIONS ARE IN MILLIMETERS.
 DIMENSIONS IN [] ARE IN INCHES AND
 ARE FOR CUSTOMER REFERENCE ONLY.

TOLERANCES FOR MILLIMETERS:
 0.5-8mm ± 0.20mm
 8-30mm ± 0.40mm
 30-120mm ± 0.50mm

TASK	NAME	DATE
DRAWN BY	W. Burns	08/18/23
CHECKED	W. Burns	08/18/23
APPROVED	N. Colucci	08/18/23



1201 Clint Moore Road
 Boca Raton, FL 33487
 TEL: 561-660-9434
www.altelix.com

PART DESCRIPTION			
Universal L Bracket 1			
PART NUMBER		HBR-001	
DRAWING NUMBER		DRC-XX-HBR-001	
SCALE:	1:3	REV:	A
		SHEET 1 OF 1	