



Altelix HQ-PRO9 Series

High Quality Pro Series 900 MHz Omni Antennas

- **All Weather Operation**
- **Robust Fiberglass Radomes**
- **Heavy Duty Extruded Base**



Overview

The Altelix 900 MHz HQ-PRO9 Series Omnidirectional Antennas provide 360 degree coverage for the 900 MHz band. They are ideal for wireless video applications, SCADA, 900 MHz cellular and Non Line of Sight (NLOS) applications.

These antennas are heavy duty industrial grade antennas featuring a thick fiberglass radome and a rugged extruded aluminum base to help ensure superior performance and enhanced survivability. Heavy duty mast-mounting hardware is included.

Full Omnidirectional Coverage



Altelix HQ-PRO9 Series 900 MHz Omni Antennas provide a Full 360° of coverage

Features:

- Robust Fiberglass Radome
- All-Weather Operation
- Integral N Female Connector
- Heavy Duty Extruded Base
- Mast Mounting Brackets Included

Applications:

- 900 MHz ISM Band
- Multipoint Applications
- Wireless Video and Security Systems
- 900 MHz SCADA Applications
- RFID
- NLOS

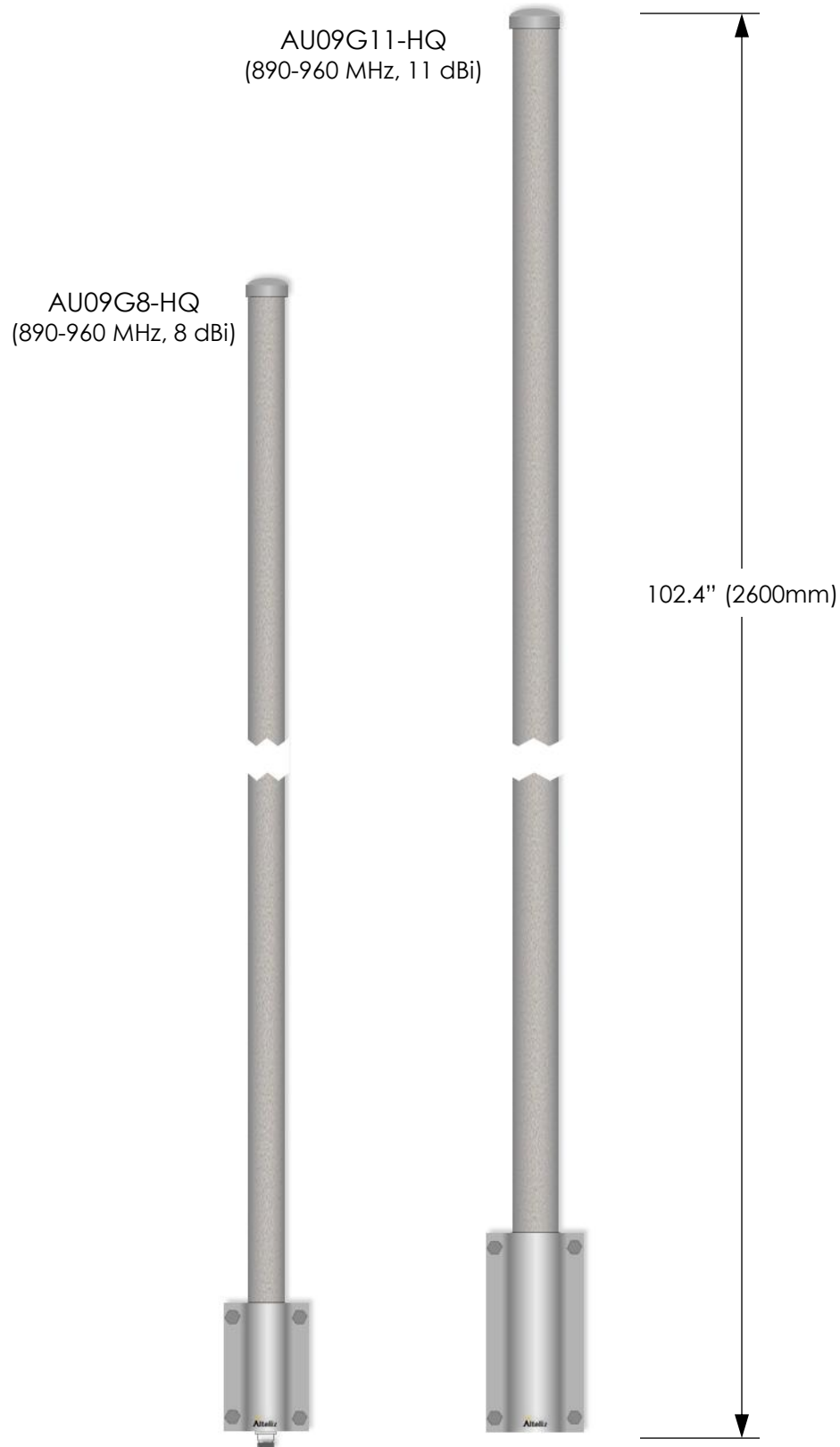


Integral Type N Female Connector



Heavy Duty Extruded Base

Models



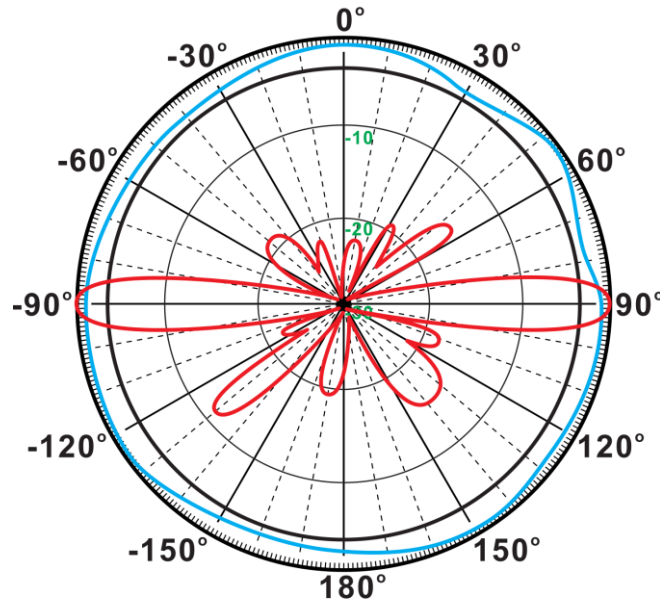


Specifications

Model	AU09G8-HQ	AU09G11-HQ
Frequency Range	890-960 MHz	890-960 MHz
Gain	8dBi	11dBi
Polarization	Vertical	Vertical
Vertical Beamwidth	11.7 Degrees	8.2 Degrees
Horizontal Beamwidth	360 Degrees	360 Degrees
VSWR	<1.5:1	<1.5:1
Impedance	50 Ohm	50 Ohm
Maximum Power	100 Watts	100 Watts
Connector	Integral Type N Female	Integral Type N Female
Dimensions	Ø1.5 x 82.4 Inches (Ø38x2092 mm)	Ø1.9 x 102.4 Inches (Ø50x2600 mm)
Mast Diameter	1.6–2.4 Inches (40-60 mm)	2.0–3.1 Inches (50-80 mm)
Weight	5.6 Lbs. (2.6 Kg)	10.1 Lbs. (4.6 Kg)
Temperature Range	-40°F - 149°F (-40°C - 65°C)	-40°F - 149°F (-40°C - 65°C)
Lightning Protection	DC Ground	DC Ground

AU09G8-HQ – Antenna Patterns

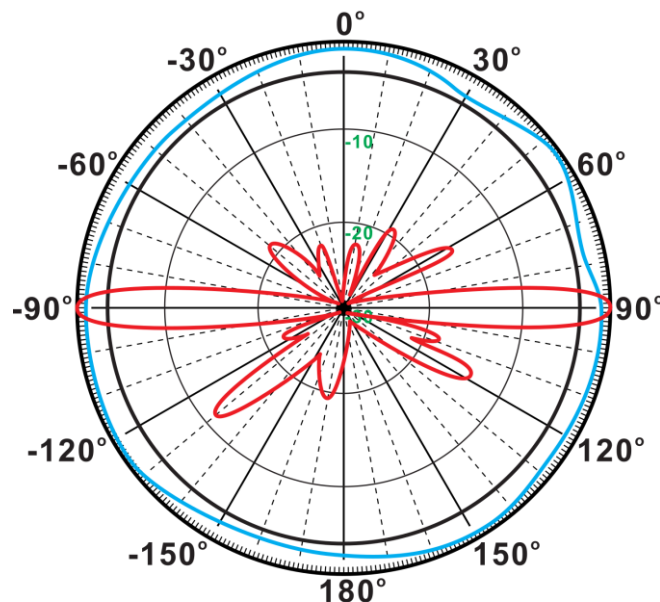
890-960 MHz



V-POL

AU09G11-HQ – Antenna Patterns

890-960 MHz



V-POL