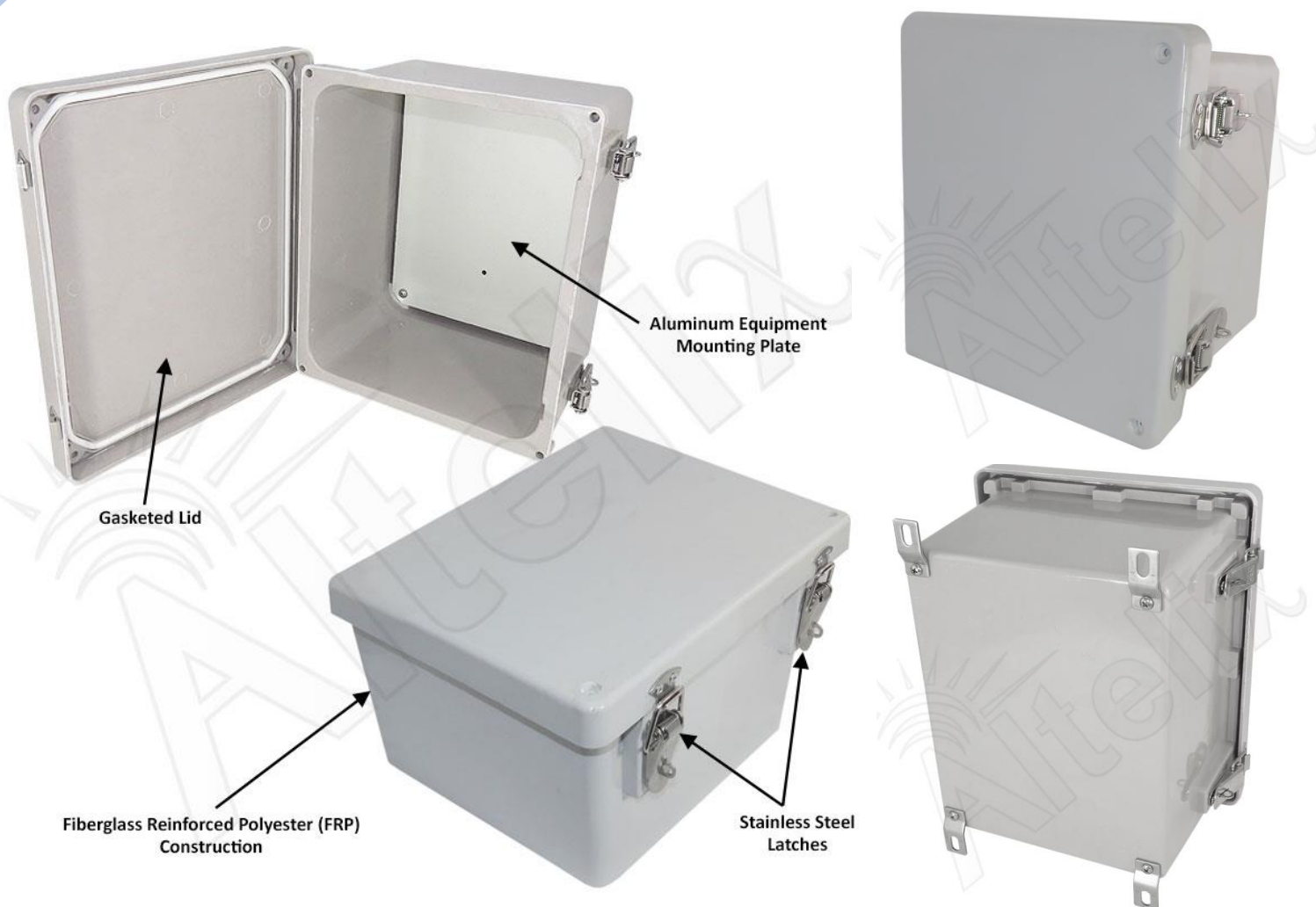


### 10x8x6 Fiberglass Weatherproof NEMA 4X Enclosure with Aluminum Equipment Mounting Plate



## Features

- Includes Easy to Drill Blank Aluminum Equipment Mounting Plate
- Water Resistant JIC Enclosure Design with Gasketed Lid
- Stainless Steel Hinge and Quick Release Latches with Padlock Hasps
- Fiberglass Reinforced Polyester, FRP
- Weatherproof, UV Stable and Highly Corrosion Resistant
- Meets NEMA 1, 2, 4, 4X, 12, 13 and IP65, IP66
- Includes Stainless Steel Mounting Feet
- RF Transparent Enclosure
- Pole Mounting Kit Available

## Description

---

### Extreme Protection Built to Last

The **Altelix NF100806P** NEMA 4X enclosure is ideal for protecting equipment from harsh environments and tampering. This rugged NEMA box is molded from durable and UV resistant fiberglass reinforced polyester (FRP) with a UL94-5V flame rating. It features a gasketed door with stainless steel continuous hinge and stainless steel quick release latches with padlock hasps.

This JIC style enclosure is dent-proof, corrosion resistant and UV stable. The FRP material is non-conductive and RF transparent. It is suitable for use in the harshest outdoor environments. It can be drilled and modified by the installer to suit unique site requirements.

### Aluminum Equipment Mounting Plate

This enclosure features an easy to drill aluminum equipment mounting plate. The enclosure and plate can be drilled and modified by the installer to suit unique site requirements.

### Mounting

Stainless steel brackets are included for secure wall mounting. Optional flange and pole mounting kits are also available.

## Specifications

---

<b>Material</b>	Fiberglass Reinforced Polyester
<b>Color</b>	Gray
<b>Outer Dimensions</b> (Height x Width x Depth)	11.7 x 9.9 x 6.8 In. (298 x 251 x 173 mm)
<b>Inner Dimensions*</b> (Height x Width x Depth)	9.0 x 7.0 x 5.5 In. (228 x 177 x 139 mm)
<b>Mounting Plate Material</b>	0.10 in. (2.5mm) Aluminum
<b>Mounting Plate Dimensions</b>	9.1 x 7.4 in. (231 x 188 mm)
<b>Weight</b>	6.2 lbs. (2.8 kg)
<b>Ratings</b>	NEMA Type 4, 4X / IP66
<b>Industry Certifications</b>	CE

\*Interior dimensions represent maximum space available for equipment.