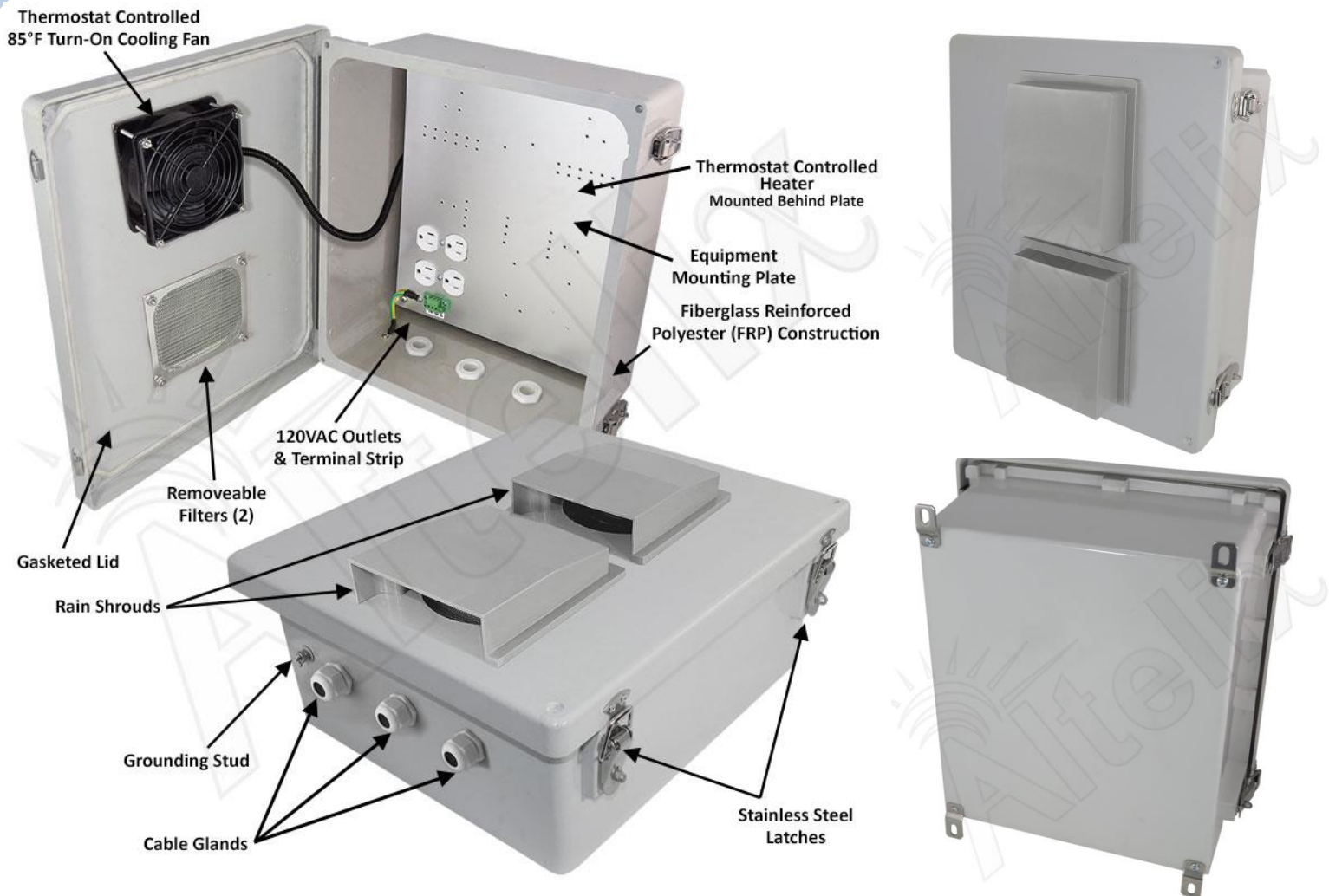


14x12x6 Fiberglass Weatherproof Vented NEMA Enclosure with 120 VAC Outlets, 85°F Turn-On Cooling Fan and 200W Heater



## Features

- Thermostat Controlled 85°F (30°C) Turn-On Cooling Fan
- Thermostat Controlled 200W Heating System
- (2) 4" Vents with Rain Shields and Screens
- (4) Pre-Wired 120VAC Outlets
- Removable 120VAC Terminal Block
- Aluminum Equipment Mounting Plate
- Stainless Steel Hinge and Quick Release Latches with Padlock Hasps
- Fiberglass Reinforced Polyester, FRP
- Weatherproof, UV Stable and Highly Corrosion Resistant
- NEMA Type 3R, 3RX / IP24 Rated
- Includes Cable Glands and Stainless Steel Mounting Feet
- RF Transparent Enclosure
- Pole Mounting Kit Available

## Description

The **Altelix NF141206VFHA1-85** Heated/Fan Cooled Vented NEMA Enclosure is ideal for outdoor environments where temperatures vary between hot and cold. It is equipped with thermostat controlled heating and cooling systems to help keep your equipment within its operational temperature range. The aluminum equipment mounting plate features four pre-wired 120VAC power outlets for your equipment and a quick-connect top entry terminal block for easy wiring by a qualified installer. It is easily removable which helps simplify on-site wiring.

**Thermostat Controlled Cooling Fan and 200W Heating System** - Ideal for outdoor environments where temperatures vary between hot and cold, this enclosure features two 4" vents with rain shrouds and a thermostat controlled cooling fan which turns on when the internal temperature reaches 85°F (30°C) which helps maintain lower internal temperatures. Controlled by a separate thermostat, the 200W heating system is ideal for harsh weather and cold environments. Both the fan and heater are wired internally, leaving all the power outlets available for installed equipment.

**Extreme Protection Built to Last** - This rugged JIC style NEMA box is molded from durable UV stable and corrosion resistant fiberglass reinforced polyester (FRP) with a UL94-5V flame rating. The FRP material is dent-proof, non-conductive and RF transparent for compatibility with wireless equipment. It can be easily drilled and modified by the installer as needed. It features a gasketed door with stainless steel continuous hinge and stainless steel quick release latches with padlock hasps. The generous size of this enclosure accommodates a wide range of equipment.

## Specifications

<b>Material</b>	Fiberglass Reinforced Polyester
<b>Color</b>	Gray
<b>Voltage / Max Load</b>	120VAC / 15A @ 120VAC
<b>Cooling Fan Turn-On Temperature</b>	85°F (30°C)
<b>Cooling Fan Turn-Off Temperature</b>	59°F (15°C)
<b>Heater Turn-On Temperature</b>	43°F (6°C)
<b>Heater Turn-Off Temperature</b>	59°F (15°C)
<b>Heater Power</b>	200 Watts
<b>Outer Dimensions</b>	15.7 x 13.8 x 8.0 Inches (401 x 352 x 205 mm)
<b>Inner Dimensions*</b>	13.0 x 11.0 x 2.7 Inches (330 x 279 x 69 mm)
<b>Mounting Plate Material</b>	0.10 in (2.5 mm) Aluminum
<b>Mounting Plate Dimensions</b>	10.9 x 12.8 in. (276 x 324 mm)
<b>Weight</b>	13.0 lbs. (5.9 kg)
<b>Terminal Block Wire Range</b>	12-18 AWG
<b>Terminal Block Strip Length</b>	6-7mm
<b>Ratings</b>	NEMA Type 3R, 3RX / IP24
<b>Flame Rating</b>	UL94-5V

\*See drawing for detailed dimensions of maximum space available for equipment.