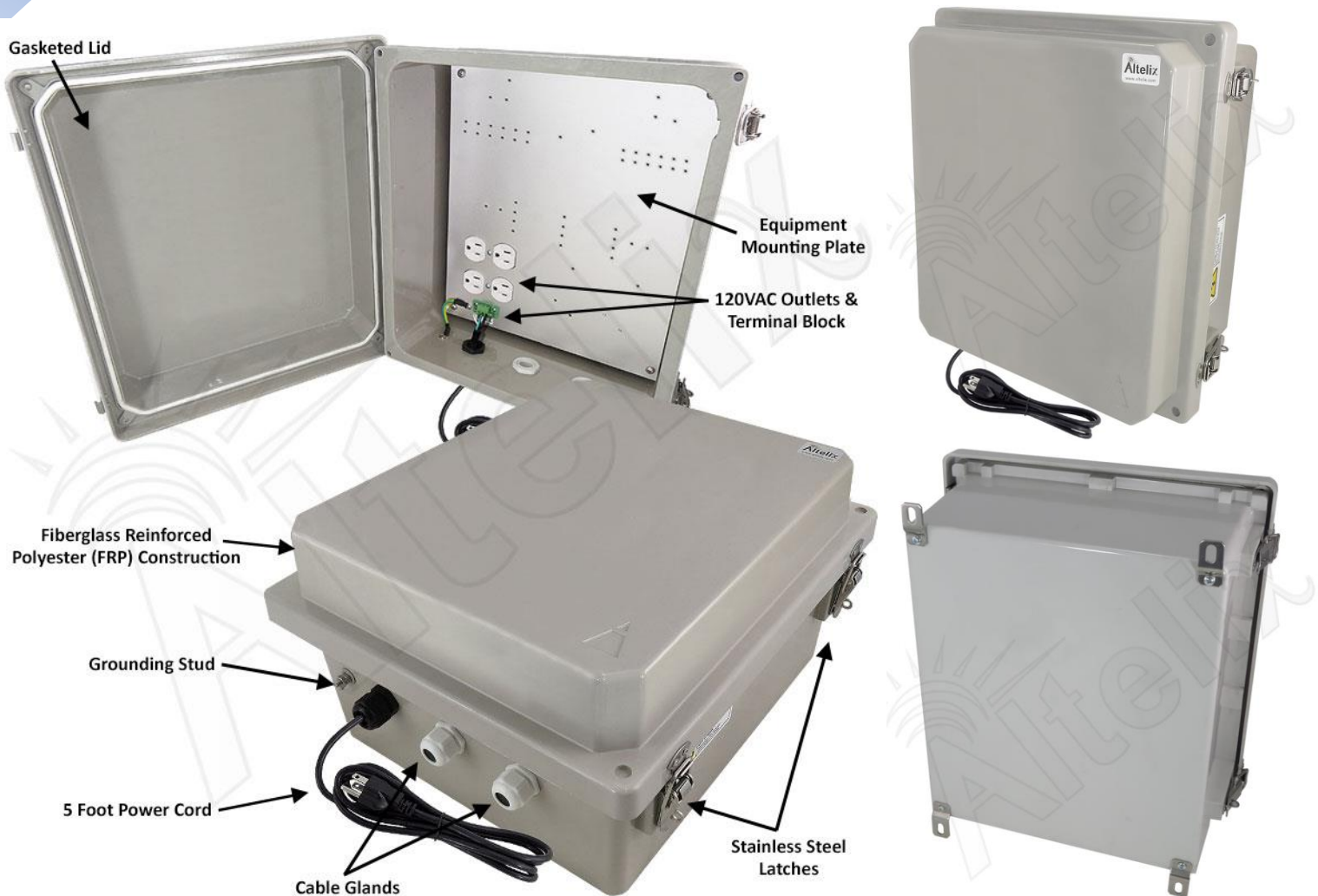


14x12x8 Fiberglass Weatherproof NEMA 4X Enclosure with Aluminum Equipment Mounting Plate, 120 VAC Outlets & Power Cord



Features

- No Electrical Wiring Required
- (4) Pre-Wired 120VAC Outlets
- Pre-Wired 5 Foot Power Cord
- Removable 120VAC Terminal Block
- Aluminum Equipment Mounting Plate
- Stainless Steel Hinge and Quick Release Latches with Padlock Hasps
- Fiberglass Reinforced Polyester, FRP
- Weatherproof, UV Stable and Highly Corrosion Resistant
- Meets NEMA 1, 2, 4, 4X, 12, 13 and IP65, IP66
- Includes Cable Glands and Stainless Steel Mounting Feet
- RF Transparent Enclosure
- Pole Mounting Kit Available

Description

Plug and Play Power for Rapid Deployment

The **Altelix NF141208A1C** NEMA 4X Enclosure is ideal for rapid deployment because no wiring is required. Simply mount the enclosure and plug the pre-wired 5 foot power cord into a nearby outlet. The aluminum equipment mounting plate features four pre-wired 120VAC power outlets for your equipment.

Get your project up and running quickly and transition to hard-wired later if needed. The power cord can be easily removed, and the quick-connect terminal block simplifies hard-wiring by a qualified installer.

Extreme Protection Built to Last

This rugged JIC style NEMA box is molded from durable UV stable and corrosion resistant fiberglass reinforced polyester (FRP) with a UL94-5V flame rating. The FRP material is dent-proof, non-conductive and RF transparent for compatibility with wireless equipment. It can be easily drilled and modified by the installer as needed. It features a gasketed door with stainless steel continuous hinge and stainless steel quick release latches with padlock hasps. The generous size of this enclosure and the extended lid accommodates a wide range of equipment.

Specifications

Material	Fiberglass Reinforced Polyester
Color	Gray
Voltage	120VAC
Max Load	10A @ 120VAC
Terminal Block Wire Range	12-18 AWG
Terminal Block Wire Strip Length	6-7mm
Outer Dimensions	15.7 x 13.8 x 8.6 Inches (401 x 352 x 218 mm)
Inner Dimensions*	13.0 x 11.0 x 6.7 Inches (330 x 279 x 171 mm)
Mounting Plate Material	0.10 in (2.5 mm) Aluminum
Mounting Plate Dimensions	10.9 x 12.8 in. (276 x 324 mm)
Weight	10.8 lbs. (4.9 kg)
Power Cord Length	5 Feet (1.5m)
Ratings*	NEMA Type 4, 4X / IP66
Flame Rating	UL94-5V

*Notes

- 1) Enclosure ports must be properly sealed to maintain NEMA Type 4, 4X / IP66 rating.
- 2) See drawing for detailed dimensions of maximum space available for equipment.