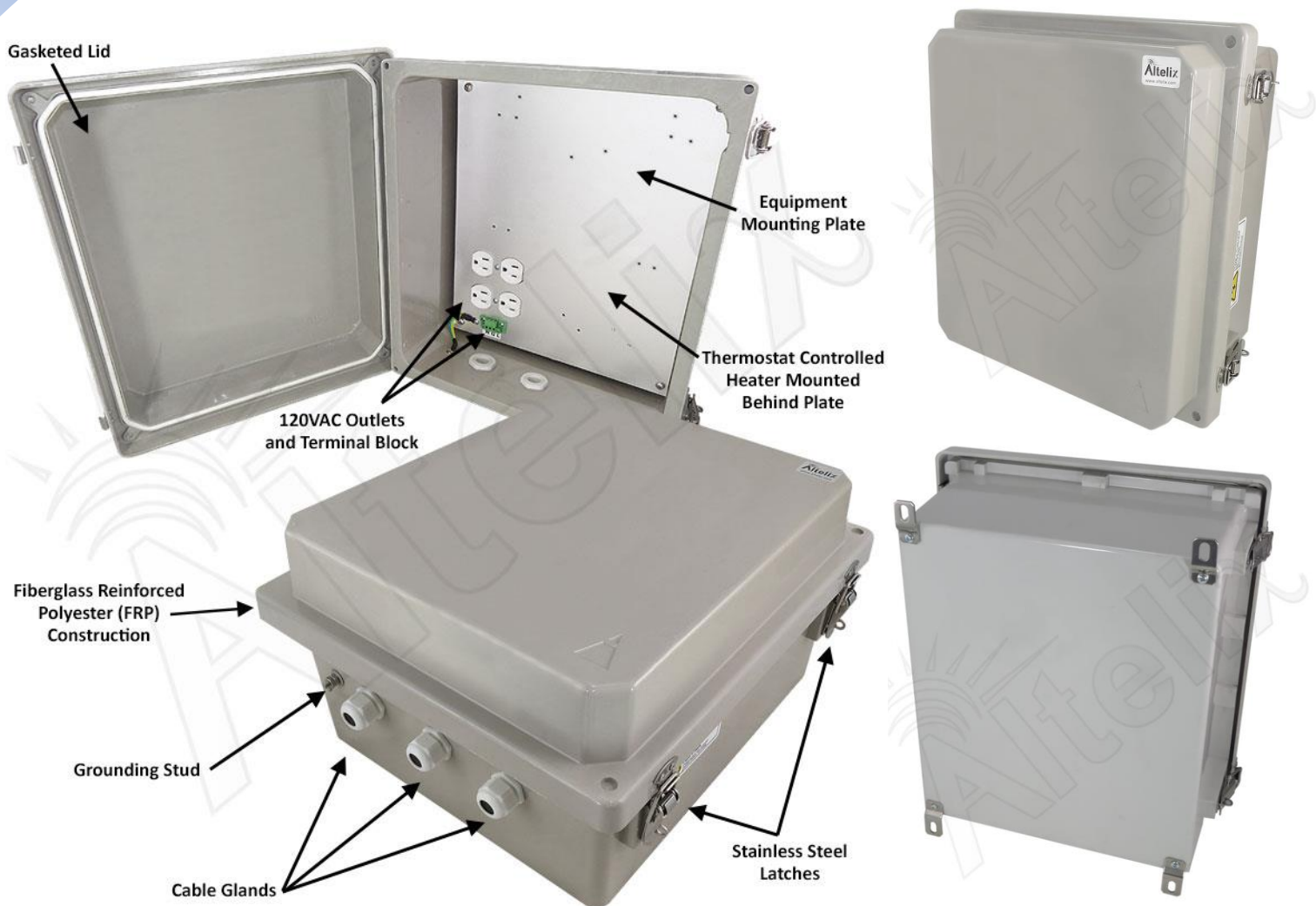


14x12x8 Fiberglass Weatherproof Heated NEMA 4X Enclosure with 120 VAC Outlets & 200W Thermostat Controlled Heating System



Features

- Thermostat Controlled 200W Heating System
- (4) Pre-Wired 120VAC Outlets
- Removable 120VAC Terminal Block
- Aluminum Equipment Mounting Plate
- Extended Lid for Increased Equipment Clearance
- Stainless Steel Hinge and Quick Release Latches with Padlock Hasps
- Fiberglass Reinforced Polyester, FRP
- Weatherproof, UV Stable and Highly Corrosion Resistant
- Meets NEMA 1, 2, 4, 4X, 12, 13, and IP65, IP66
- Includes Cable Glands and Stainless Steel Mounting Feet
- RF Transparent Enclosure
- Pole Mounting Kit Available

Description

The **Altelix NF141208HA1** is ideal for cold environments. It features a thermostat controlled 200W heating system. The heater turns on when the internal temperature reaches 43°F (6°C) and turns off when it rises to 59°F (15°C). The heater is mounted below the equipment plate and wired internally so leaves the interior space and power outlets available for your equipment.

This enclosure provides four pre-wired 120VAC power outlets and a terminal block, for easy wiring by a qualified installer.

Extreme Protection Built to Last - This rugged JIC style NEMA box is molded from durable UV stable and corrosion resistant fiberglass reinforced polyester (FRP) with a UL94-5V flame rating. The FRP material is dent-proof, non-conductive and RF transparent for compatibility with wireless equipment. It can be easily drilled and modified by the installer as needed. It features a gasketed door with stainless steel continuous hinge and stainless steel quick release latches with padlock hasps. The generous size of this enclosure and the extended lid accommodate a wide range of equipment.

Removable Terminal Block - This enclosure features our 120VAC top entry terminal block. It is easily removable which helps simplify on-site wiring. It can accept wires sizes from 12 to 18 AWG. The wires are secured by side terminal screws.

Specifications

Material	Fiberglass Reinforced Polyester
Color	Gray
Voltage	120VAC
Max Load	15A @ 120VAC
Heater Turn-On Temperature	43°F (6°C)
Heater Turn-Off Temperature	59°F (15°C)
Heater Power	200 Watts
Terminal Block Wire Range	12-18 AWG
Terminal Block Wire Strip Length	6-7mm
Outer Dimensions	15.7 x 13.8 x 8.6 Inches (401 x 352 x 218 mm)
Inner Dimensions*	13.0 x 11.0 x 6.7 Inches (330 x 279 x 171 mm)
Mounting Plate Material	0.10 in (2.5 mm) Aluminum
Mounting Plate Dimensions	10.9 x 12.8 in. (276 x 324 mm)
Weight	11.7 lbs. (5.3 kg)
Ratings*	NEMA Type 4, 4X / IP66
Flame Rating	UL94-5V

*Notes

- 1) Enclosure ports must be properly sealed to maintain NEMA Type 4, 4X / IP66 rating.
- 2) See drawing for detailed dimensions of maximum space available for equipment.