

Altelix Aimable Windowed NEMA 4X 12x9x7 Polycarbonate Indoor/Outdoor Enclosure with 120VAC Outlets and Power Cord



Features

- Heavy duty tilt-n-swivel mounting bracket to precisely aim the enclosure
- Transparent polycarbonate window in lid provides visibility to installed equipment while enclosure is closed
- No electrical wiring required, (2) pre-wired 120VAC power outlets & 5 foot power cord
- Gasketed lid with dual stainless steel latches
- Available with or without aluminum or PVC equipment mounting plates
- Durable Polycarbonate + ABS construction, weatherproof and UV Stable
- Meets NEMA 1, 2, 4, 4X, 12, 13 and IEC 529 IP65, IP66
- Tamper-Proof locking screw with key and provision for padlock
- Enclosure can be wall, ceiling or pole mounted
- RF transparent for wireless devices
- Includes (2) locking keys, cable grommets, cable glands, zip ties, hook-n-loop tape and wall mounting hardware
- Optional pole mount kits available

Description

The **Altelix NP120907WYA1C NEMA 4X Windowed Enclosure** is simple to install because no wiring is required. Simply mount the enclosure and plug the pre-wired 5 foot power cord into a nearby outlet. Two internal pre-wired 120VAC power outlets are provided to power your equipment.

Aimable Enclosure - This enclosure features a heavy duty cast aluminum tilt-n-swivel mounting bracket attached to the rear of the enclosure. This bracket is designed to articulate in both vertical and horizontal planes which allows for precise adjustment and aiming of the enclosure to provide optimum wireless coverage for wireless equipment or the aiming of installed camera equipment. This tilt-n-swivel bracket is designed for both wall and pole/mast mounting. It can be mounted to pole and masts ranging from 1-3 inches in diameter. Using the optional adjustable stainless steel bands available from Altelix, it can be mounted to poles up to 13 inches in diameter.

Polycarbonate Viewing Window - This enclosure features a 4x6 inch viewing window installed in the lid which allows visibility to installed equipment while the enclosure lid is close. Constructed from transparent polycarbonate, this viewing window is UV resistant and will not yellow. A silicone gasket ensures the enclosure meets its NEMA 4X rating.

Equipment Mounting Options - This enclosure provides multiple ways to install equipment. Raised bosses located in the base of this enclosure can be used to mount an equipment plate. These same bosses can also be used to install Altelix's 35mm Top Hat DIN Rail kits (sold separately). Up to (5) DIN Rail kits can be installed into the enclosure base. This provides greater versatility when mounting equipment inside the enclosure. A large flat section in the base is also provided for use with the hook-n-loop tape included in the accessory kit.

In addition to the raised bosses this enclosure can be purchased with either an **Aluminum** or **Non-Metallic PVC** equipment mounting plates. The 1.5mm thick aluminum equipment mounting plate can be easily drilled and modified by the installer. Ideal for wireless applications, the RF transparent 10mm thick PVC equipment mounting plate features a No-Drill design. Mounting radios and other equipment can be easily done simply by using self-tapping screws.

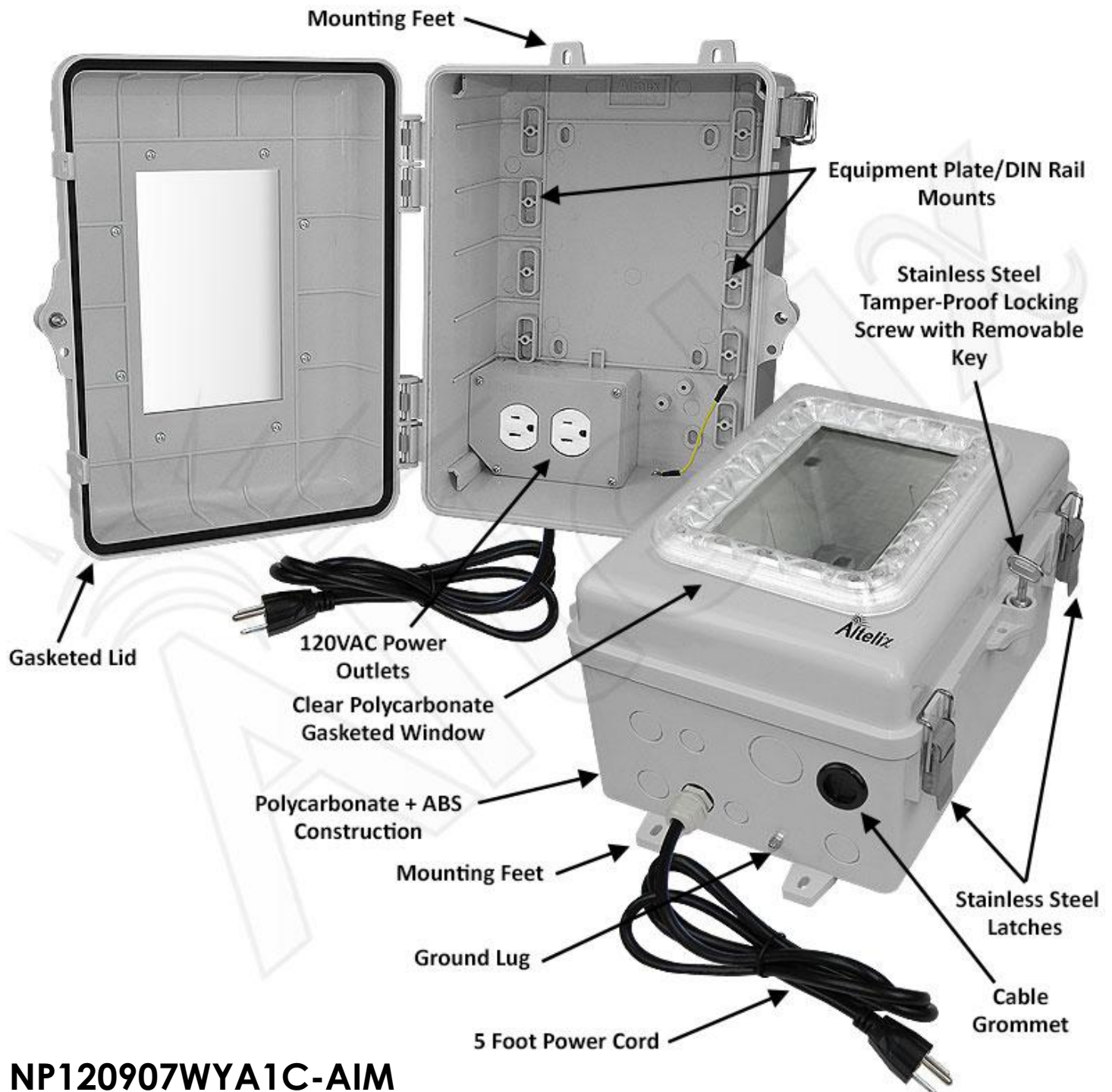
RF Transparent Design - The NP120907WYA1C is ideal for WiFi applications. The non-metallic design of the enclosure will not interfere with the radio's operation. The size of this enclosure will fit a wide range of popular wireless access points on the market.

Secure Your Equipment - These NP series enclosures feature a gasketed lid with dual stainless steel quick release latches. A stainless steel security screw with keys and a provision for a padlock are also provided.

Polycarbonate + ABS Protection Built to Last - This enclosure is molded out of UV resistant Polycarbonate + ABS, an industrial grade plastic with greater strength and durability than standard ABS. This enclosure can be easily drilled and modified by the installer to suit unique site requirements. It meets or exceeds NEMA 1, 2, 4, 4X, 12, 13 and IEC 529 IP65, IP66.

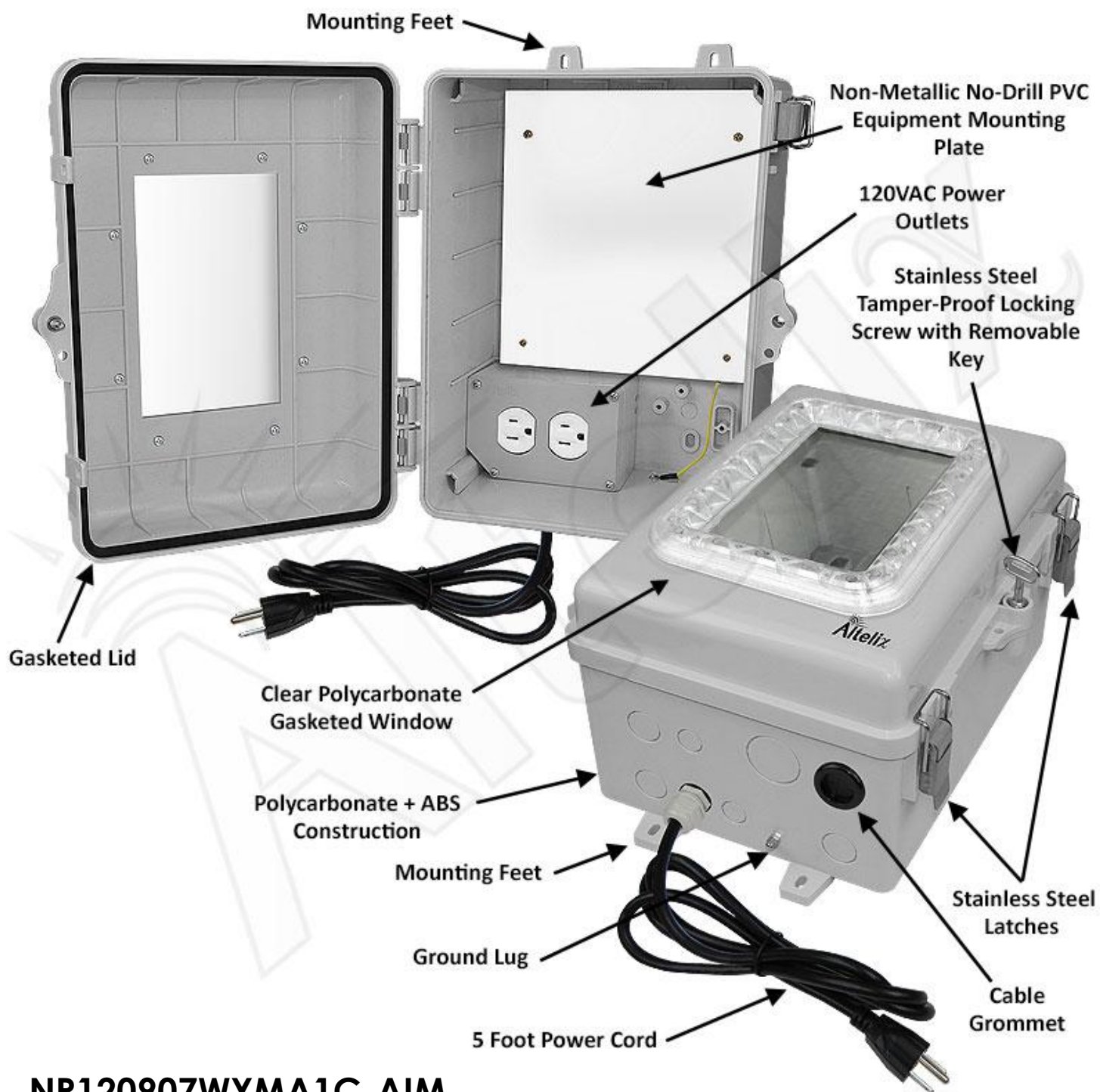
Complete with Cable Grommets and Wire Management Accessories - This enclosure includes an assortment of cable grommets and cable glands that can be installed in the knock-out holes for a weather resistant seal. Also included in the accessory kit are wall anchors, zip ties, wire management loops, hook-n-loop tape, ground wire, (2) door locking keys and more.

Product Photos



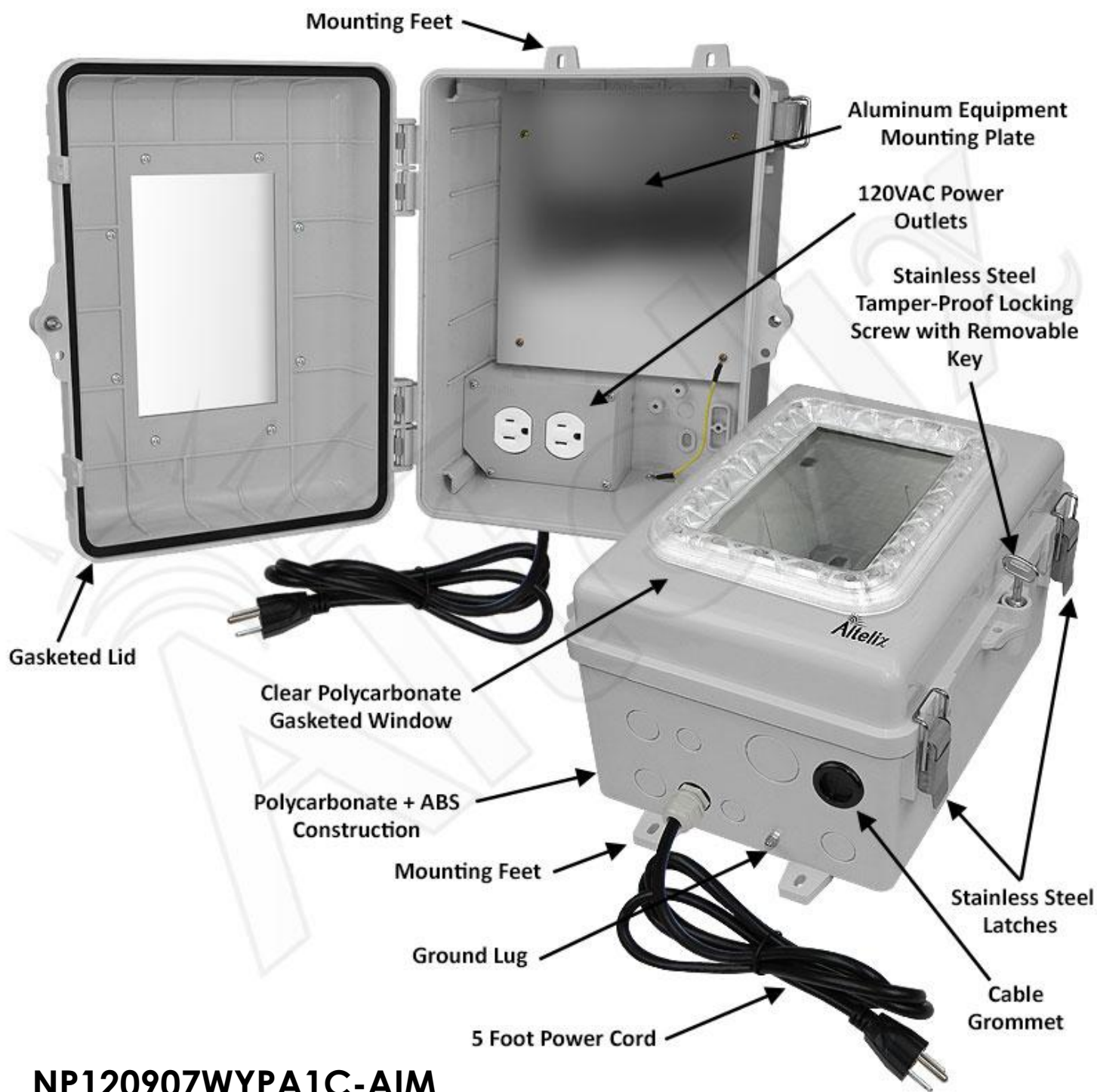
NP120907WYA1C-AIM

Product Photos



NP120907WYMA1C-AIM

Product Photos



NP120907WYPA1C-AIM

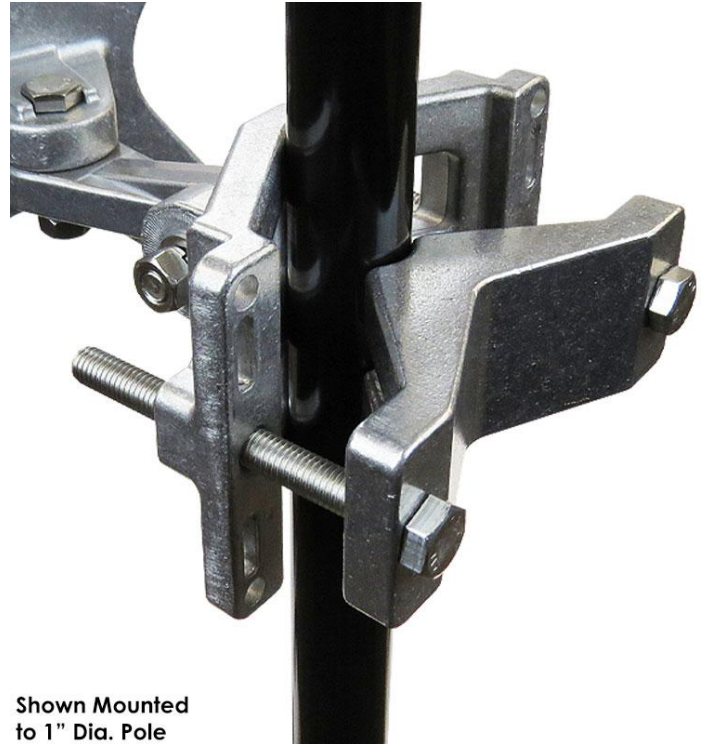
Product Photos



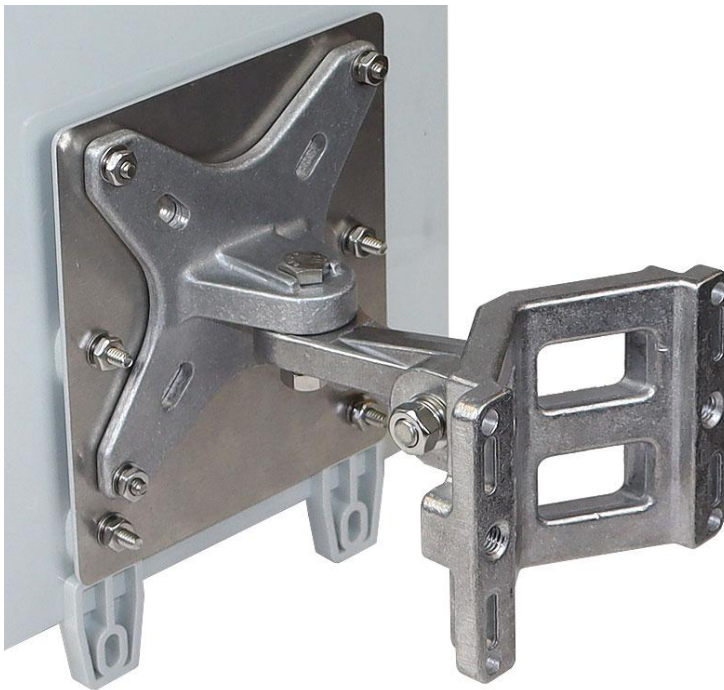
Product Photos



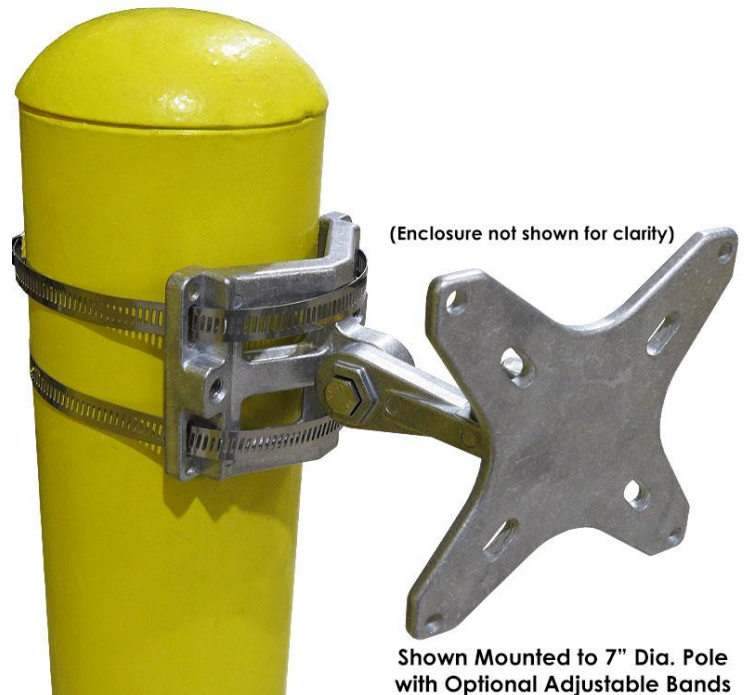
Shown Mounted
to 3" Dia. Pole



Shown Mounted
to 1" Dia. Pole



Wall Mounting Configuration



(Enclosure not shown for clarity)

Shown Mounted to 7" Dia. Pole
with Optional Adjustable Bands

Specifications

Material	PC+ABS Polycarbonate / ABS Blend
Color	Gray
Voltage	120VAC
Max Load	10A @ 120VAC
Outer Dimensions (Height x Width x Depth)	13.0 x 10.2 x 7.5 Inches (332 x 259 x 191 mm)
Inner Dimensions* (Height x Width x Depth)	7.8 x 7.1 x 5.3 inches (198 x 180 x 134 mm)
Mounting Bracket Material	Die-Cast Aluminum
Pole Mounting Diameter Size	1 to 3 inches (25.4 to 76.2 mm)
Weight with Tilt Bracket	5.5 lbs. (2.5 kg)
Power Cord Length	5 Feet (1.5m)
Ratings	Meets or Exceeds NEMA 1, 2, 4, 4X, 12, 13 and IEC 529 IP65, IP66
Flame Rating	Meets UL94-V0
Industry Certifications	CE
Knockout Sizes (Diameter)	(3) 0.62 in. (16 mm) (4) 1.02 in. (26 mm) (1) 1.30 in. (33 mm)

Optional PVC Equipment Mounting Plate

Mounting Plate Material	0.40 in. (10mm) PVC
Mounting Plate Size	10.4 x 7.3 in. (265 x 186 mm)

Optional Aluminum Equipment Mounting Plate

Mounting Plate Material	0.06 in. (1.5mm) Aluminum
Mounting Plate Size	10.4 x 7.3 in. (265 x 186 mm)

*Interior dimensions represent maximum space available for equipment.