

17x14x9 Polycarbonate+ABS Windowed Aimable Weatherproof NEMA
Enclosure with Cooling Fan, 120VAC Power Outlets and Power Cord



Features

- Heavy duty tilt-n-swivel mounting bracket to precisely aim the enclosure
- Transparent polycarbonate window in lid provides visibility to installed equipment while enclosure is closed
- Thermostat controlled cooling fan to help expel heat
- Dual vents with rain shields and screens
- Internal pre-wired 120VAC power outlets and 5 foot power cord
- Available with aluminum or PVC equipment mounting plates
- Durable Polycarbonate + ABS construction, weatherproof and UV stable
- Meets NEMA 3R, 3RX and IP24
- Extra deep gasketed lid with dual stainless steel latches
- Tamper-Proof locking screw with key and provision for padlock
- Enclosure can be wall, ceiling or pole mounted
- RF transparent for wireless devices
- Includes (2) locking keys, cable grommets, cable glands, zip ties, hook-n-loop tape and wall mounting hardware

Description

The **Altelix NP171409WXVFA1C-AIM Fan Cooled Vented Windowed NEMA Enclosure** is simple to install because no wiring is required. Simply mount the enclosure and plug the pre-wired 5 foot power cord into a nearby outlet. The power cord can be removed and the power receptacle hard-wired by a qualified installer.

Available with (2) or (4) 120VAC Power Outlets – These pre-wired 120VAC power outlets used to provide power to installed equipment. Mounted to the bottom of the enclosure they do not interfere with area used for installing equipment.

Aimable Enclosure - A heavy duty cast aluminum tilt-n-swivel mounting bracket attached to the rear of the enclosure is designed to articulate in both vertical and horizontal planes which allows for precise adjustment and aiming of the enclosure to provide optimum wireless coverage for wireless equipment or the aiming of installed camera equipment. This tilt-n-swivel bracket is designed for both wall and pole/mast mounting. It can be mounted to pole and masts ranging from 1-3 inches in diameter. Using the optional adjustable stainless steel bands available from Altelix, it can be mounted to poles up to 13 inches in diameter.

Polycarbonate Viewing Window – A 4x6 inch viewing window installed in the lid allows visibility to installed equipment while the enclosure lid is close. The operational status of installed equipment can easily be confirmed since indicator lights can be viewed without opening the enclosure. This enclosure is also ideal for protecting security cameras from theft or damage. Constructed from transparent polycarbonate, this viewing window is UV resistant and will not yellow. A silicone gasket ensures the enclosure meets its NEMA 4X rating.

Equipment Mounting Options - Raised bosses located in the base of this enclosure can be used to mount an equipment plate. These same bosses can also be used to install Altelix's 35mm Top Hat DIN Rail kits (sold separately). Up to (5) DIN Rail kits can be installed into the enclosure base. A large flat section in the base is also provided for use with the hook-n-loop tape included in the accessory kit.

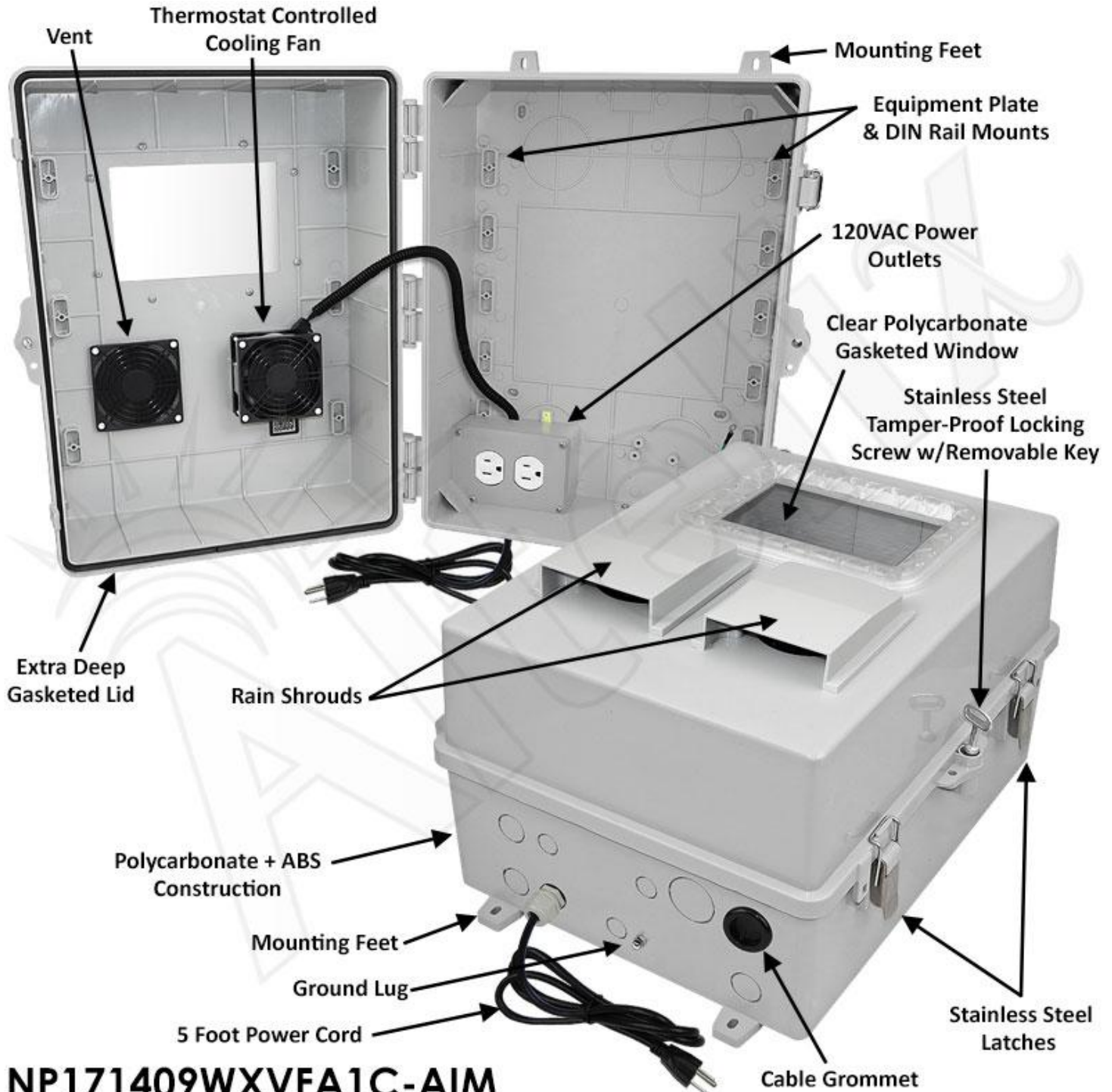
This enclosure can also be purchased with either an **Aluminum** or **Non-Metallic PVC** equipment mounting plates. The aluminum equipment mounting plate can be easily drilled and modified by the installer. Ideal for wireless applications, the RF transparent PVC equipment mounting plate features a No-Drill design. Mounting radios and other equipment can be easily done simply by using self-tapping screws.

Secure Your Equipment - These NP series enclosures feature dual stainless steel quick release latches. A stainless steel security screw with keys and a provision for a padlock are also provided.

Polycarbonate + ABS Protection Built to Last - This enclosure is molded out of UV resistant Polycarbonate + ABS, an industrial grade plastic with greater strength and durability than standard ABS. This enclosure can be easily drilled and modified by the installer to suit unique site requirements. It meets or exceeds NEMA 1, 2, 4, 4X, 12, 13 and IEC 529 IP65, IP66.

Complete with Cable Grommets and Wire Management Accessories - This enclosure includes an assortment of cable grommets and cable glands that can be installed in the knock-out holes for a weather resistant seal. Also included in the accessory kit are wall anchors, zip ties, wire management loops, hook-n-loop tape, ground wire, (2) door locking keys and more.

Product Photos

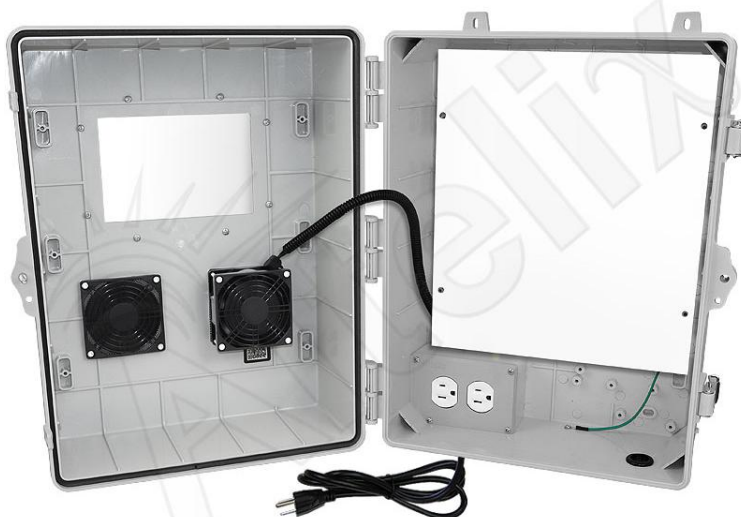


NP171409WXVFA1C-AIM

Product Photos – Equipment Mounting Plate Options



NP171409WXVFA1C-AIM



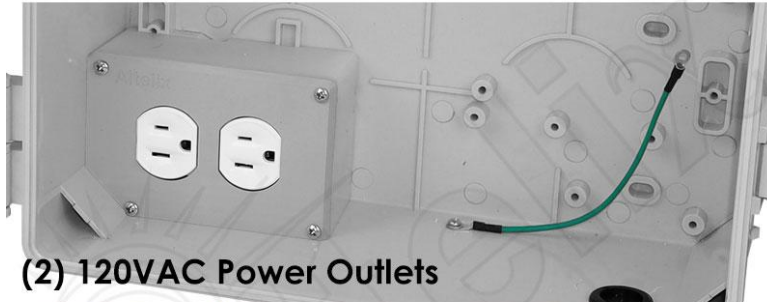
NP171409WXVMFA1C-AIM
w/Non-Metallic No-Drill PVC Equipment
Mounting Plate



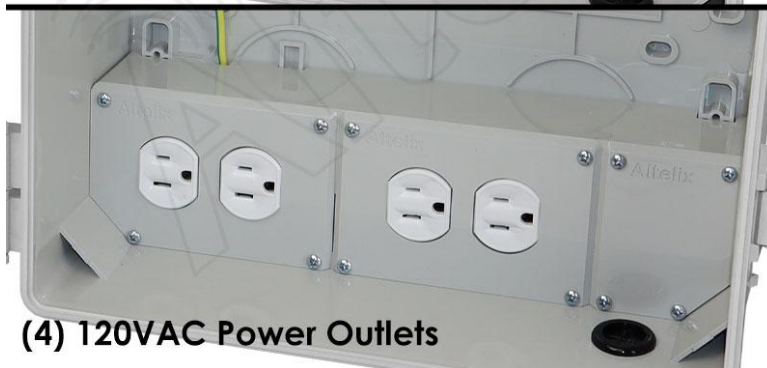
NP171409WXVPFA1C-AIM
w/Aluminum Equipment Mounting Plate

Product Photos

Two Power Outlet Options Available



(2) 120VAC Power Outlets



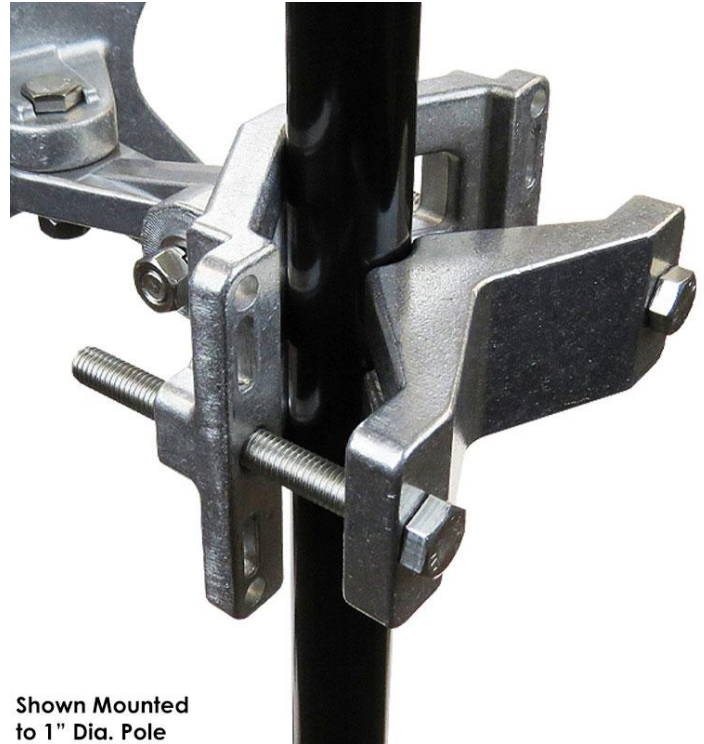
(4) 120VAC Power Outlets



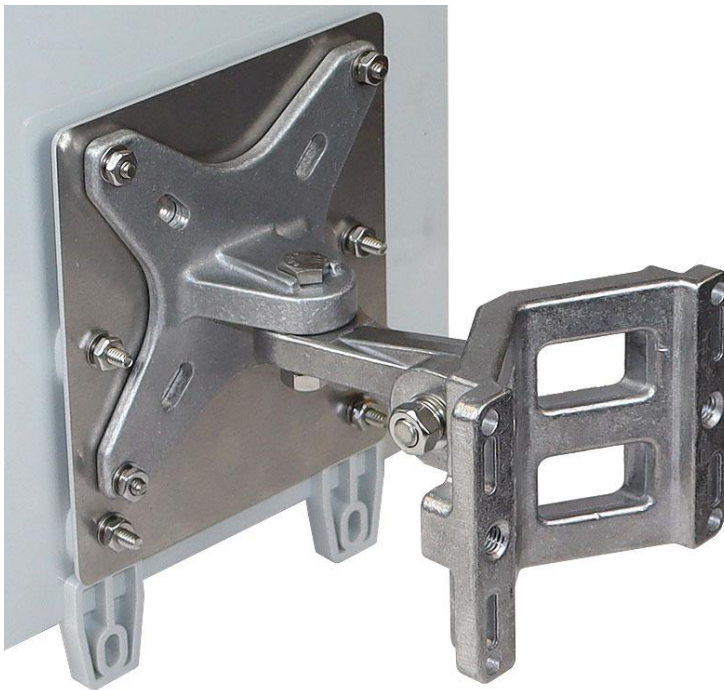
Product Photos



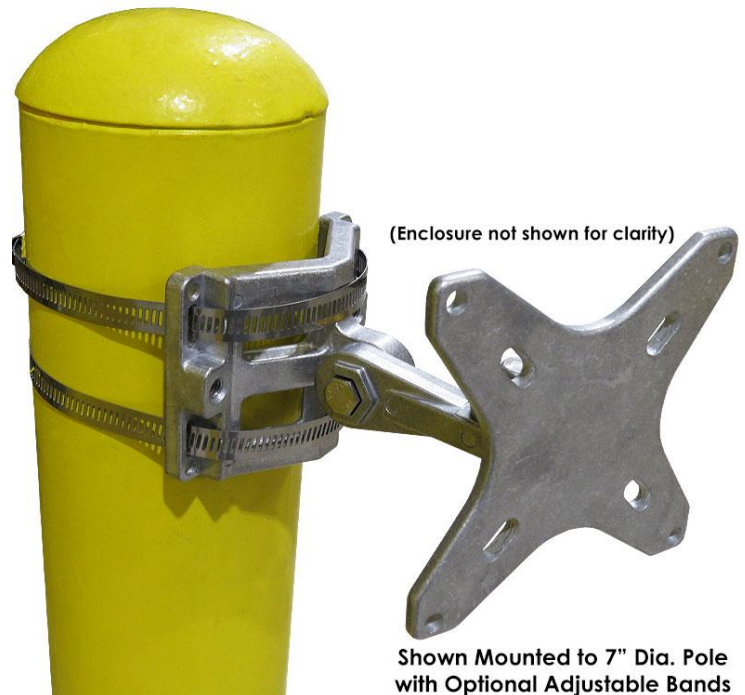
Shown Mounted
to 3" Dia. Pole



Shown Mounted
to 1" Dia. Pole



Wall Mounting Configuration



(Enclosure not shown for clarity)

Shown Mounted to 7" Dia. Pole
with Optional Adjustable Bands

Specifications

Material	PC+ABS Polycarbonate / ABS Blend
Color	Gray
Voltage	120VAC
Max Load	10A @ 120VAC
Cooling Fan Turn-On Temperature	100°F (38°C) ±6°F
Cooling Fan Turn-Off Temperature	79°F (26°C) ±9°F
Outer Dimensions	17.1 x 13.6 x 10.5 Inches (435 x 347 x 266 mm)
Inner Dimensions	11.8 x 9 x 7.3 inches (299 x 228 x 185 mm)
Weight with Tilt Bracket	9.2 lbs. (4.17 kg)
Mounting Bracket Material	Die-Cast Aluminum
Pole Mounting Diameter Size	1 to 3 in. Dia. (25.4 to 76.2 mm)
Power Cord Length	5 Feet (1.5m)
Ratings	Meets NEMA 3R, 3RX and IP24
Flame Rating	Meets UL94-V0
Industry Certifications	CE
Knock-Out Sizes	(4) 0.62 in. (16 mm) (4) 1.02 in. (26 mm) (1) 1.30 in. (33 mm)

Optional PVC Equipment Mounting Plate

Mounting Plate Material	0.40 in. (10 mm) PVC
Mounting Plate Size	11.8 x 10.6 in. (299 x 269 mm)

Optional Aluminum Equipment Mounting Plate

Mounting Plate Material	0.06 in. (1.5 mm) Aluminum
Mounting Plate Size	11.8 x 10.6 in. (299 x 269 mm)