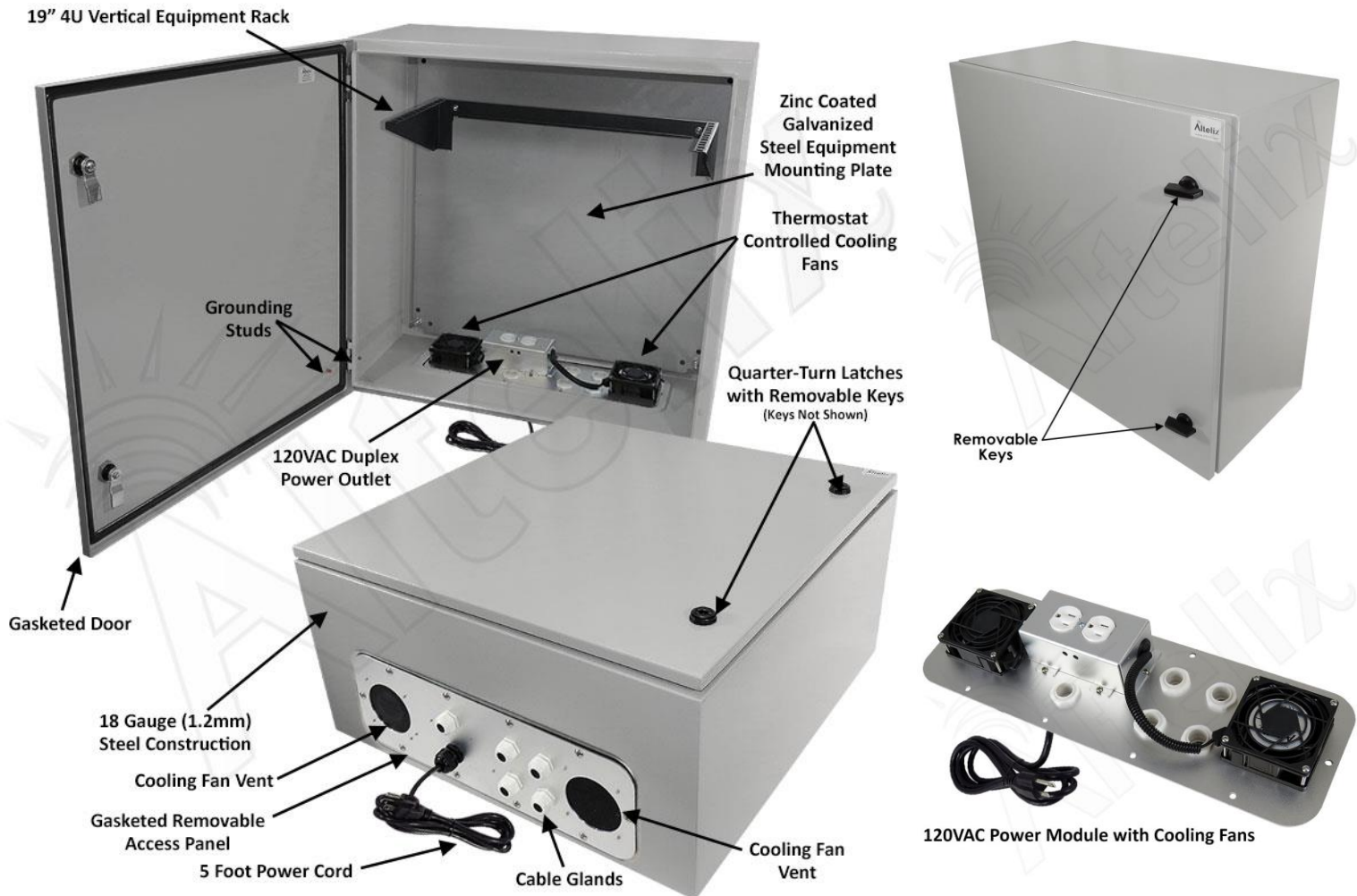


24x24x12 Steel Weatherproof NEMA Enclosure with 19" Wide 4U Vertical Rack, Dual Cooling Fans, Single Duplex 120 VAC Power Outlet and Power Cord



## Features

- Dual Thermostat Controlled Cooling Fans
- Removable Power Module with (2) 120VAC Outlets and 5 Ft. Power Cord
- Heavy Duty Continuous Seam Welded 18 Gauge Steel Construction
- Meets NEMA 3R, 3RX and IP24
- Includes 19" 4U Vertical Rack Frame and Zinc Coated Galvanized Steel Equipment Mounting Plate
- Epoxy Polyester Textured Light Gray Powder Coat Finish
- Dual Quarter-Turn Door Latches with Removable Keys
- Optional Keyed Lock Set Latch and Padlock Latch Available

## Description

---

**Construction and Features** - This rugged vented enclosure features continuous seam welded 18 Gauge (1.2mm thick) steel construction. The enclosure door is fully gasketed making this enclosure suitable for use indoors or outdoors. The door features reinforced hinges and a dual quarter-turn latches to secure the enclosure. Internal grounding studs are provided on both the door and enclosure. Both the enclosure and door are finished in a rugged epoxy polyester textured light gray powder coat finish.

**Internal 4U Vertical 19" Equipment Rack** - The NS242412VFA1R2C-RV4U features a standard 19" 4U vertical equipment rack. It is designed to accommodate a wide range of equipment such as network switches, rack mount audio/video equipment and most other rack mountable equipment. The rack frame mounts to a 18 Gauge (1.2mm thick) galvanized steel plate which can also be drilled and modified by the installer to unique site requirements.

**Removable Power and Fan Module** - The NS242412VFA1R2C-RV4U features a removable power and fan module that attaches to the bottom of the enclosure. Constructed of rugged aluminum, this can be easily removed for servicing and is fully gasketed to ensure a proper seal. This power module features a single pre-wired duplex 120VAC power outlet (2 outlets total) and a pre-wired 5 foot power cord, so no additional wiring is required.

**Dual Cooling Fans Ventilation** - This enclosure features dual thermostat-controlled cooling fans. The low noise, high airflow fans help maintain lower internal temperatures by allowing air to be either pushed or pulled through the enclosure. Both fans are wired internally so they do not require the use of the AC outlets leaving them available for internal equipment use.

## Specifications

---

<b>Material</b>	Continuous Seam Welded 18 Gauge (1.2 mm) Steel
<b>Color</b>	Light Gray (RAL 7035)
<b>Voltage / Max. Load</b>	120VAC / 10A @ 120VAC
<b>Cooling Fans Turn-On Temperature</b>	100°F (38°C)
<b>Cooling Fans Turn-Off Temperature</b>	79°F (26°C)
<b>Outer Dimensions</b> (Height x Width x Depth)	23.6 x 23.6 x 11.8 Inches (600 x 600 x 300 mm)
<b>Inner Dimensions*</b> (Height x Width x Depth)	18.0 x 20.0 x 10.3 Inches (457 x 508 x 260 mm)
<b>Rack Frame</b>	19" Width 4U Vertical Mount
<b>Equipment Mounting Plate Material</b>	18 Gauge (1.2 mm) Zinc Coated Galvanized Steel
<b>Equipment Mounting Plate Dimensions</b>	22.2 x 21.6 In. (565 x 550 mm)
<b>Weight</b>	47.1 lbs. (21.4 kg)
<b>Power Cord Length</b>	5 Feet (1.5m)
<b>Ratings*</b>	Meets or Exceeds NEMA 3R, 3RX and IP24

\*Notes: Interior dimensions represent maximum space available for equipment.