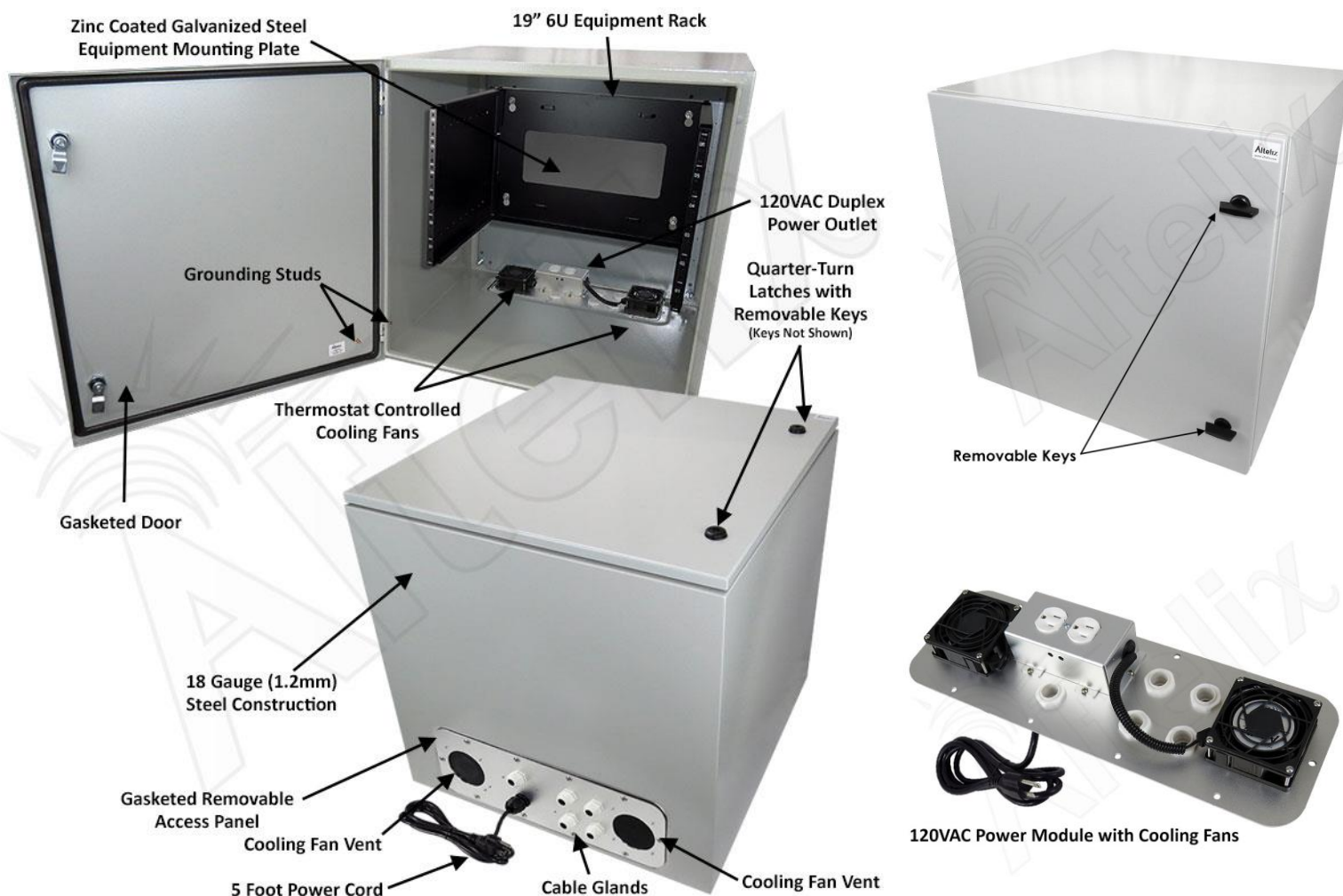




NS242424VFA1R2C-R6U

24x24x24 Steel Weatherproof NEMA Enclosure with 19" Wide 6U Rack, Dual Cooling Fans, Single 120 VAC Duplex Power Outlet and Power Cord



Features

- Dual Thermostat Controlled Cooling Fans
- Removable Power Module with (2) 120VAC Outlets and 5 Ft. Power Cord
- Heavy Duty Continuous Seam Welded 18 Gauge Steel Construction
- Meets NEMA 3R, 3RX and IP24
- Includes 19" 6U Rack Frame and Zinc Coated Galvanized Steel Equipment Mounting Plate
- Epoxy Polyester Textured Light Gray Powder Coat Finish
- Dual Quarter-Turn Door Latches with Removable Keys
- Optional Keyed Lock Set Latch and Padlock Latch Available

Description

Construction and Features - This rugged vented enclosure features continuous seam welded 18 Gauge (1.2mm thick) steel construction. The enclosure door is fully gasketed making this enclosure suitable for use indoors or outdoors. The door features reinforced hinges and dual quarter-turn latches to secure the enclosure. Internal grounding studs are provided on both the door and enclosure. Both the enclosure and door are finished in a rugged epoxy polyester textured light gray powder coat finish.

Internal 6U 19" Equipment Rack - The NS242424VFA1R2C-R6U features a standard 19" 6U equipment rack. It is designed to accommodate a wide range of equipment such as network switches, rack mount audio/video equipment and most other rack mountable equipment. The rack frame mounts to a 18 Gauge (1.2mm thick) galvanized steel plate which can also be drilled and modified by the installer to unique site requirements.

Removable Power and Fan Module - The NS242424VFA1R2C-R6U features a removable power and fan module that attaches to the bottom of the enclosure. Constructed of rugged aluminum, this can be easily removed for servicing and is fully gasketed to ensure a proper seal. This power module features a single pre-wired duplex 120VAC power outlet (2 outlets total) and a pre-wired 5 foot power cord, so no additional wiring is required.

Dual Cooling Fans Ventilation - This enclosure features dual thermostat-controlled cooling fans. The low noise, high airflow fans help maintain lower internal temperatures by allowing air to be either pushed or pulled through the enclosure. Both fans are wired internally so they do not require the use of the AC outlets leaving them available for internal equipment use.

Specifications

Material	Continuous Seam Welded 18 Gauge (1.2 mm) Steel
Color	Light Gray (RAL 7035)
Voltage / Max. Load	120VAC / 10A @ 120VAC
Cooling Fans Turn-On Temperature	100°F (38°C)
Cooling Fans Turn-Off Temperature	79°F (26°C)
Outer Dimensions (Height x Width x Depth)	23.6 x 23.6 x 23.6 Inches (600 x 600 x 600 mm)
Inner Dimensions* (Height x Width x Depth)	19.7 x 20.0 x 22.0 Inches (502 x 508 x 559 mm)
Rack Frame	19" Width 6U
Equipment Mounting Plate Material	18 Gauge (1.2 mm) Zinc Coated Galvanized Steel
Equipment Mounting Plate Dimensions	22.2 x 21.6 In. (565 x 550 mm)
Weight	71.1 lbs. (32.2 kg)
Power Cord Length	5 Feet (1.5m)
Ratings*	Meets or Exceeds NEMA 3R, 3RX and IP24

*Notes: Interior dimensions represent maximum space available for equipment.