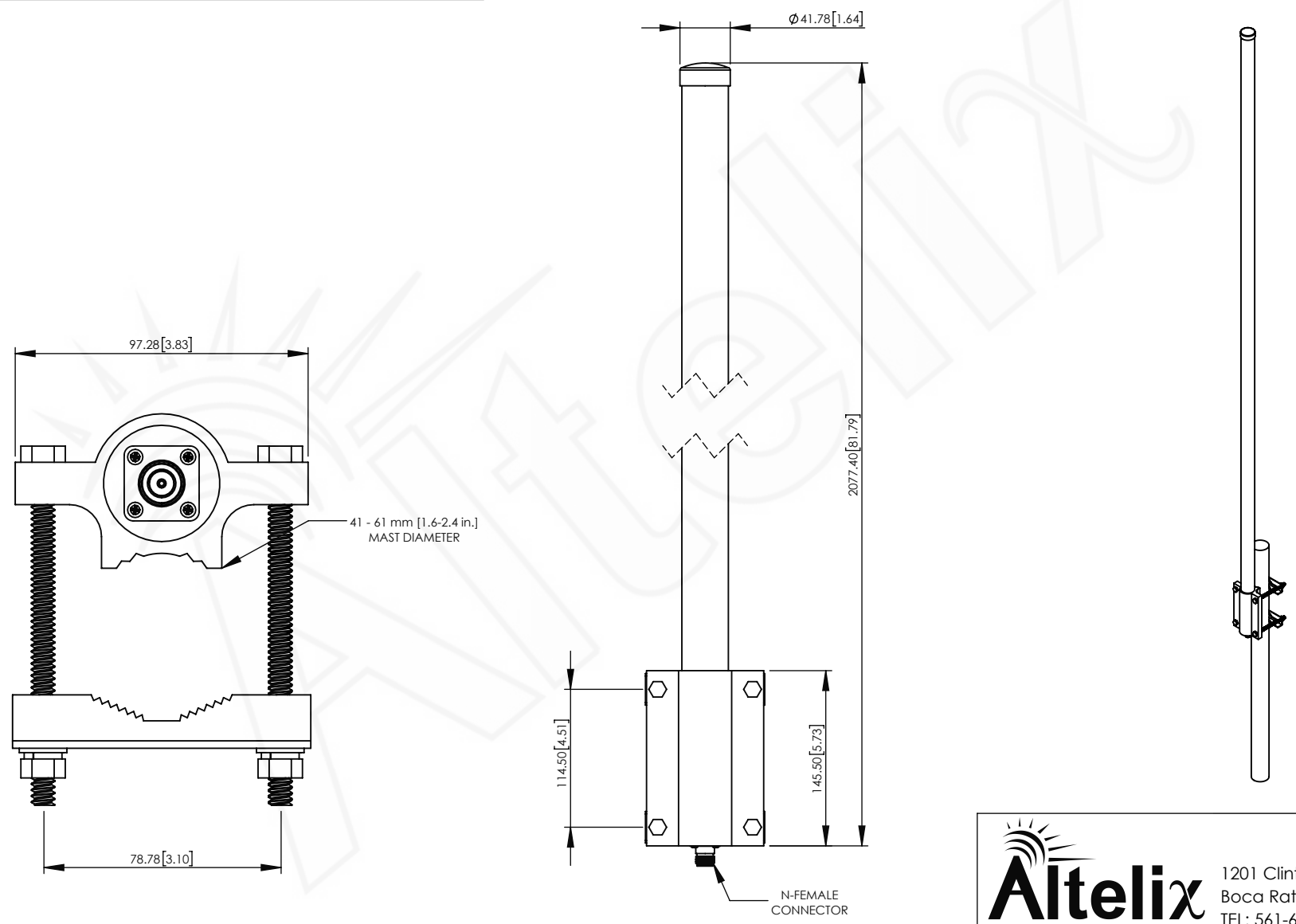


REV	DATE	DESCRIPTION
A	04/12/17	INITIAL RELEASE

THE INFORMATION CONTAINED IN THIS DRAWING IS THE SOLE PROPERTY OF ALTELIX LLC. ANY REPRODUCTION IN PART OR WHOLE WITHOUT THE WRITTEN PERMISSION OF ALTELIX LLC IS PROHIBITED. ALL SPECIFICATIONS SUBJECT TO CHANGE WIHTOUT NOTICE. (C) 2017 ALTELIX LLC.



NO.	DESCRIPTION	MATERIAL	FINISH	QTY.
8	-	-	-	-
7	-	-	-	-
6	NUT	STEEL	-	4
5	LOCK WASHER	STEEL	-	4
4	WASHER	STEEL	-	4
3	BOLT	STEEL	-	4
2	MAST CLAMP	STEEL	POWDER COAT	2
1	OMNI ANTENNA	-	-	1

UNLESS OTHERWISE SPECIFIED:
 DIMENSIONS ARE IN MILLIMETERS.
 DIMENSIONS IN [] ARE IN INCHES AND
 ARE FOR CUSTOMER REFERENCE ONLY.

TOLERANCES FOR MILLIMETERS:
 0.5-8mm ± 0.20mm
 8-30mm ± 0.40mm
 30-120mm ± 0.50mm

TASK	NAME	DATE
DRAWN BY	N.S.C.	04/11/17
CHECKED	-	-
APPROVED	-	-

Altelix
 www.altelix.com

1201 Clint Moore Road
 Boca Raton, FL 33487
 TEL: 561-660-WIFI

PART DESCRIPTION
**900 MHz 8 dBi HIGH QUALITY
 OMNI ANTENNA**

PART NUMBER: AU09G8-HQ
 DRAWING NUMBER: DRW-AU09G8-HQ
 SCALE: NA REV: A SHEET 1 OF 1