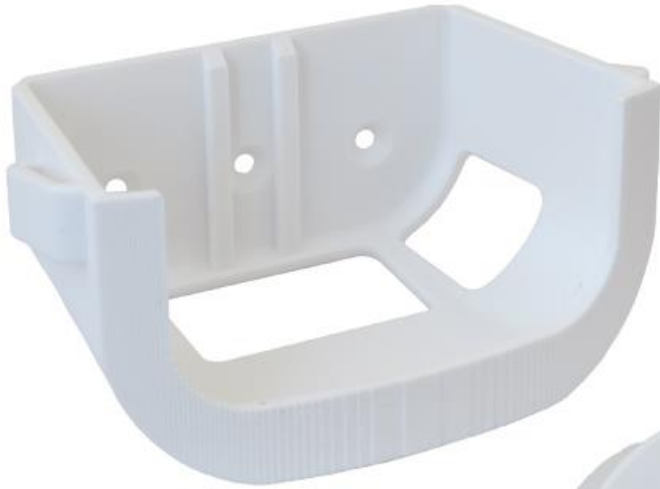




## **BMP-EER1 & BMP-EER3**



BMP-EER1 Shown



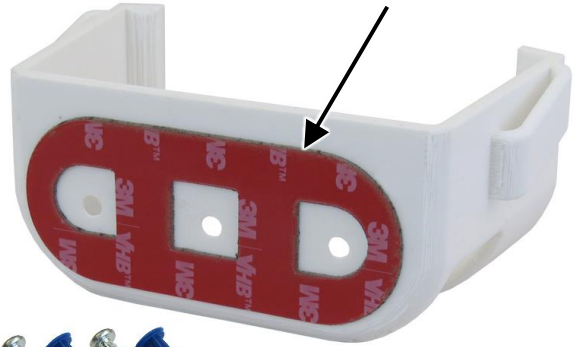
## **Installation Guide**

**Altelix LLC USA: 866-660-WIFI (9434) International: +1 561-660-9434 sales@altelix.com www.altelix.com**  
Copyright (C) 2023 Altelix LLC. All rights reserved. Altelix and the Altelix logo are Trademarks and/or Registered Trademarks of Altelix LLC.  
Specifications are subject to change without notice. See [www.altelix.com](http://www.altelix.com) for most current information

## BMP-EER1 & BMP-EER3 Installation Guide

The BMP-EER1 and BMP-EER3 can be directly mounted to the inside of a network equipment cabinet using the included double-sided tape. For wall mounting, wall anchors and screws are also provided.

### Double Sided Tape



To use the included double-sided tape, firmly attach to the rear of the mount as shown.

For wall mounting use the drill template below.



### Wall Anchors and Screw

BMP-EER1 Shown

Once mounted, insert the eero device into the cradle as shown.



### Hook and Loop Strap



(Optional Step) For additional security and installations subject to vibrations, an optional hook and loop strap is provided to secure the eero device in the mounting cradle.

**Installation Note:** If attaching to surfaces such as glass, mirror and tile, be sure to clean surfaces first with alcohol wipes or glass cleaner

Place the template in the desired mounting location and mark the holes. Follow all applicable safety precautions when drilling. If necessary, drill pilot holes where you made your mark. If you will be using the wall anchors provided with your enclosure drill 3/16 inch holes. If you will be using the screws directly, drill 3/32 inch holes.

### Drill Template for Mounting Holes



### Printing Instructions

Print onto 8-1/2" x 11" paper. Select "Actual Size" or "100% Scale" when printing.