



BMP-RKU1-DIN



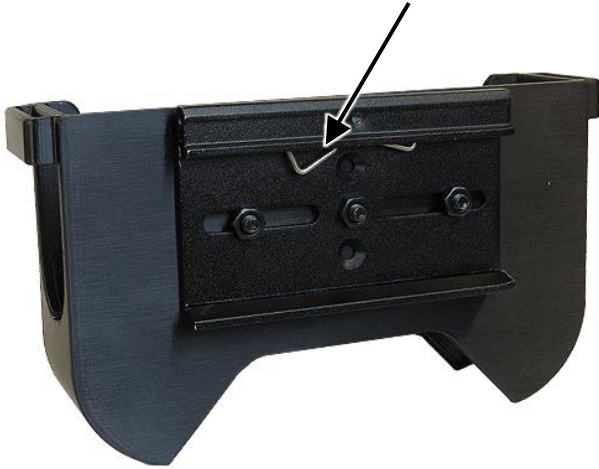
Installation Guide

Altelix LLC USA: 866-660-WIFI (9434) International: +1 561-660-9434 sales@altelix.com www.altelix.com
Copyright (C) 2023 Altelix LLC. All rights reserved. Altelix and the Altelix logo are Trademarks and/or Registered Trademarks of Altelix LLC.
Specifications are subject to change without notice. See www.altelix.com for most current information

BMP-RKU1-DIN Installation Guide

The BMP-RKU1-DIN is designed to mount directly to a 35mm Top Hat DIN rail using the supplied DIN rail mounting clip.

DIN Rail Mounting Clip



To install, using the supplied hardware attach the DIN rail mounting clip to the back of the BMP-RKU1-DIN as shown.

Once the BMP-RKU1-DIN is mounted to a DIN rail, insert the Roku Ultra into the cradle as shown.



Hook and Loop Strap



(Optional Step) For installations subject to vibrations, an optional hook and loop strap is provided to secure the Roku Ultra in the mounting cradle.

Note: 35mm Top Hat DIN rail not included.