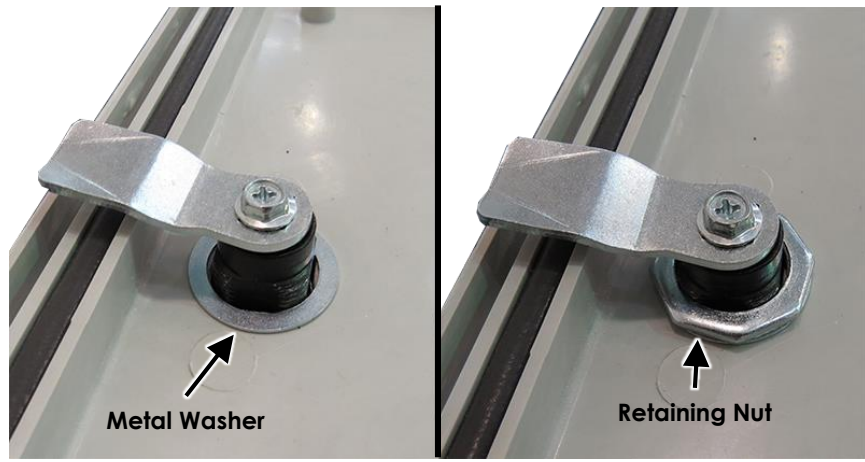


**Step 3**

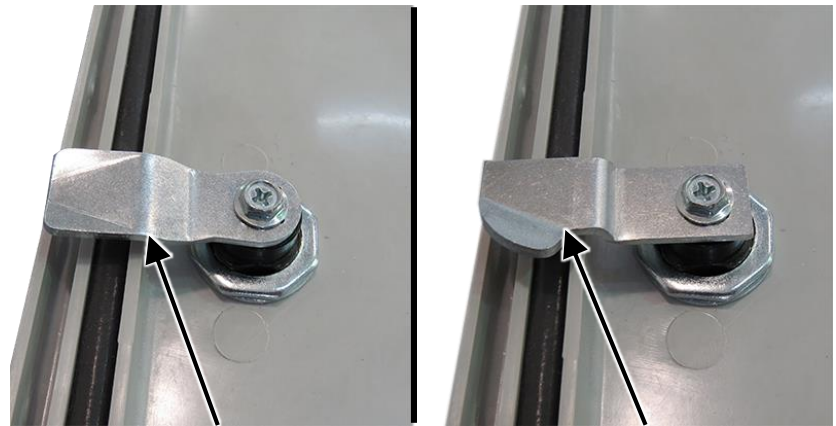
When installing Keyed Lock into door, orientate as shown. Install the metal washer and secure with retaining nut.



Inside of Enclosure Door

**Step 4**

Once Keyed Lock is secured, remove the lock cam which is for use with the NS series enclosures only. This will be replaced with the second lock cam included in the bag.



Remove NS Enclosure Lock Cam

Install NFC Enclosure Lock Cam

Once installed, test Padlock Latch to ensure proper operation.

**Keyed Lock Set for NS/NFC Series Enclosures**

The HN-0005 is for use with Altelix NS series and NFC series enclosures. It is a direct replacement for the standard latch included with these enclosures.

**What's In The Bag?**

Keyed Lock with Retaining Nut, Rubber Washer, Metal Washer and Lock Cam for use with NS Series enclosures

Lock Cam for use with NFC Series enclosures.

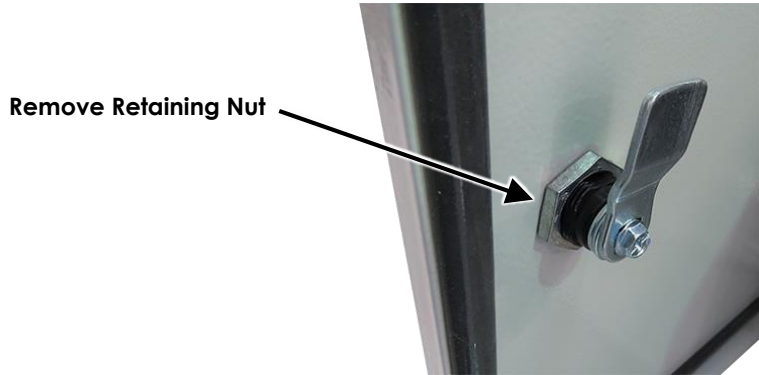


**NS Series Enclosure Installation**

The HN-0005 comes pre-configured for use in the NS series enclosure. The second lock cam included is not needed for this installation.

**Step 1**

Remove the existing latch by removing the retaining nut.



Remove Retaining Nut

**Step 2**

Remove retaining nut and metal washer from the Keyed Lock and install into enclosure door. For proper seal, ensure rubber washer is as shown below.



Front of Enclosure Door

**Step 3**

When installing Keyed Lock into door, orientate as shown. Install the metal washer and secure with retaining nut.



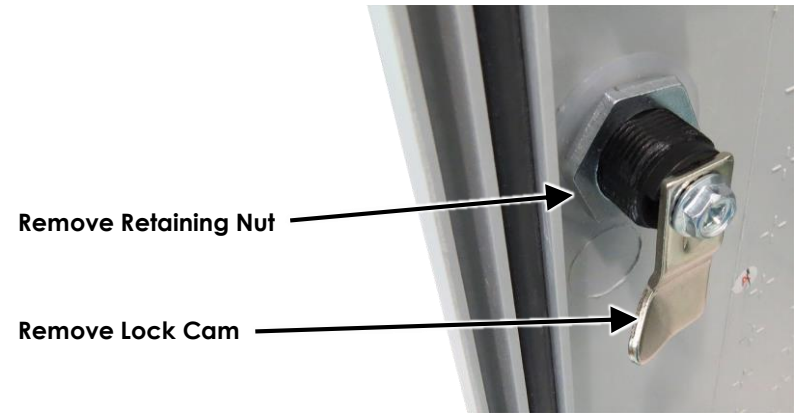
Inside of Enclosure Door

Once installed, test Keyed Lock to ensure proper operation.

**NFC Series Enclosure Installation**

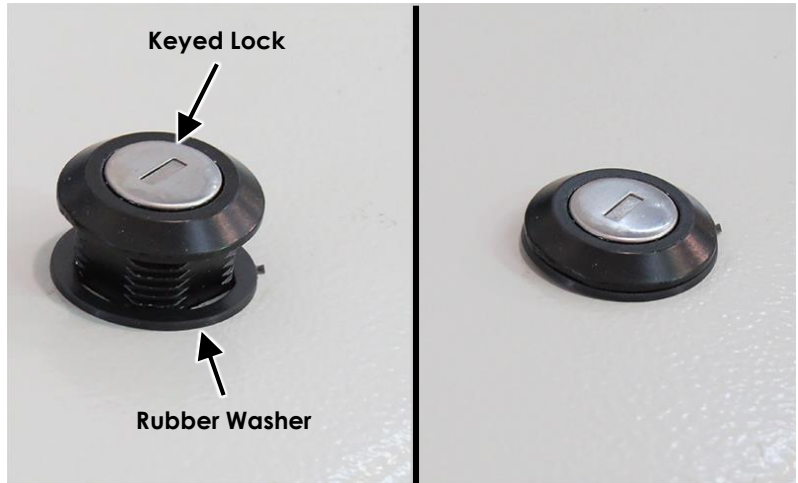
**Step 1**

Remove the existing latch by first removing the lock cam. Then the retaining nut can be removed.



**Step 2**

Remove retaining nut and metal washer from the Keyed Lock and install into enclosure door. For proper seal, ensure rubber washer is as shown below.



Front of Enclosure Door