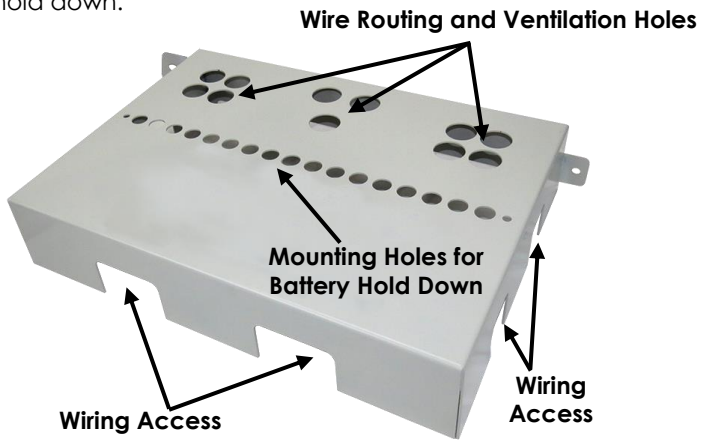
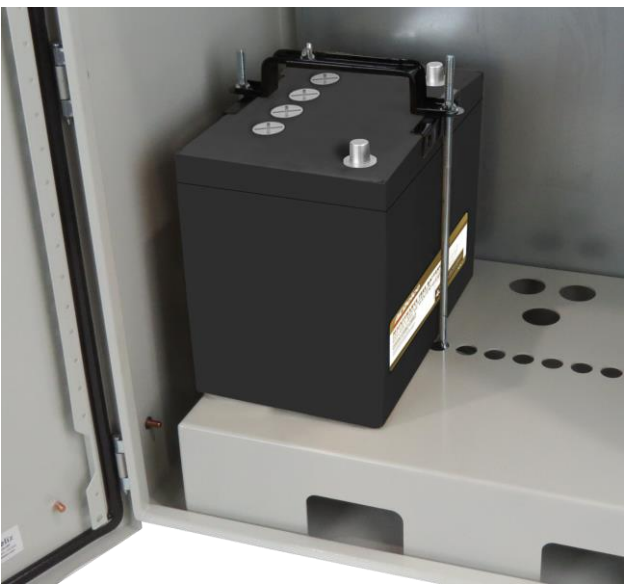


Step 5:

Various holes and slots in the battery shelf provide ventilation and wire routing access. The row of smaller holes are used in junction with the battery hold down.



Position the battery in the required location and secure using the Adjustable Battery Hold Down as shown.



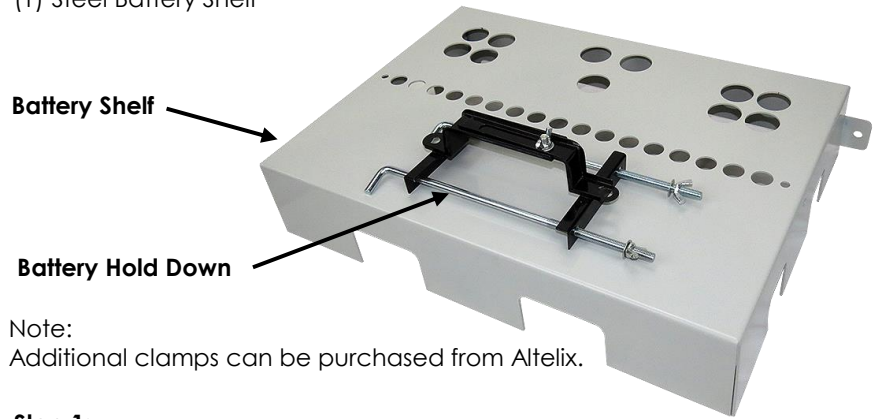
Battery Shelf Installation Guide

WARNING: READ ALL INSTRUCTION BEFORE USE. THIS KIT IS DESIGNED TO BE INSTALLED BY A TRAINED PROFESSIONAL INSTALLER.

Installing Battery Shelf Kit

The NHPS241 6S-BAT battery shelf easily installs into the Altelix NS steel enclosure. The installation uses existing hardware. The kit includes:

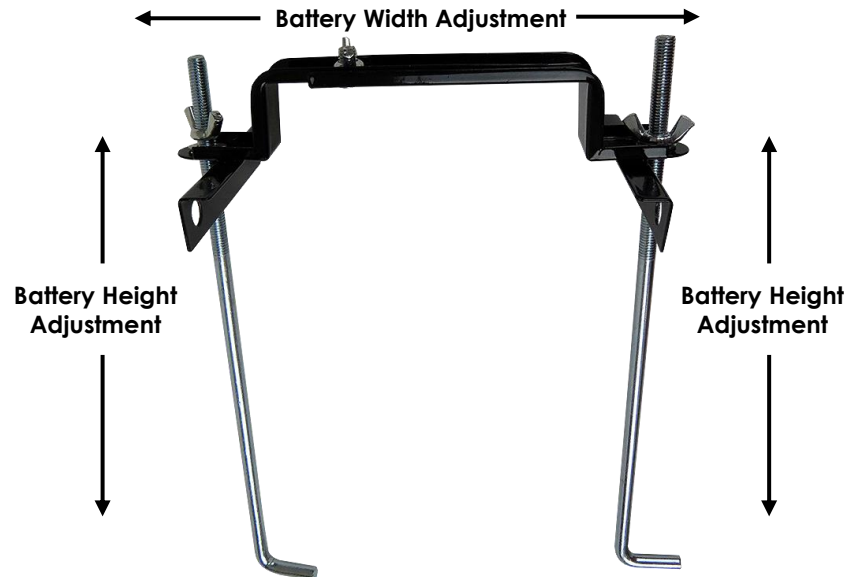
- (2) Adjustable Battery Hold Down
- (1) Steel Battery Shelf



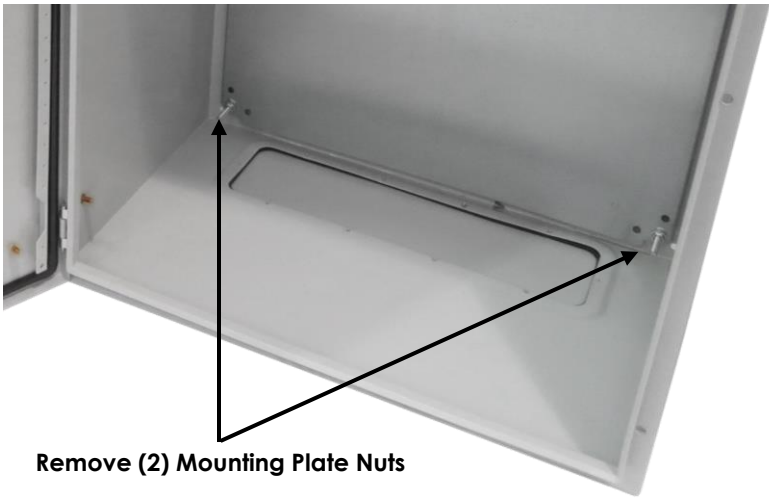
Note:
Additional clamps can be purchased from Altelix.

Step 1:

Remove battery hold down from packaging and assemble as shown.



Step 2:
Using a 13mm hex wrench, remove the (2) mounting plate nuts as shown.

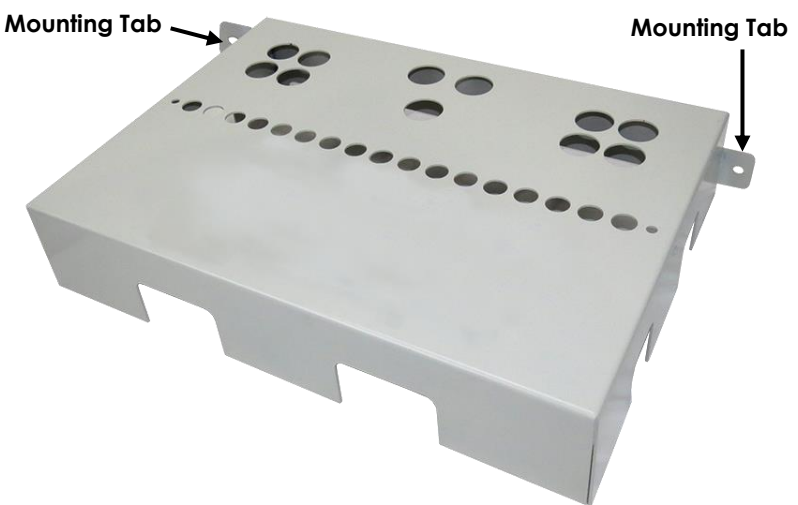


Remove (2) Mounting Plate Nuts

Installation Note:

Enclosures using the Power Module with Fans, this module will need to be removed prior (or installed after) to installation of the Battery Shelf.

Step 3:
(2) Tabs are provided on the battery shelf to secure it to the mounting plate bolts.

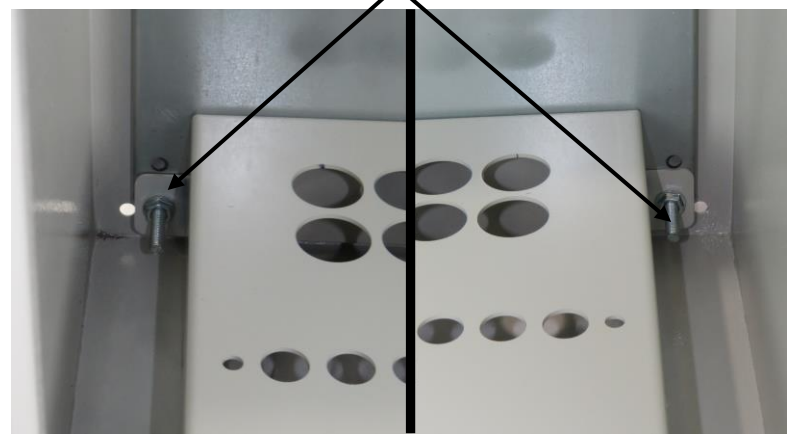


Step 3 Continued:
Line up battery shelf mounting tabs with mounting bolts and install into the enclosure as shown.



Step 4:
Secure the battery shelf to enclosure using the (2) mounting plate nuts removed earlier.

Mounting Plate Nuts



Got Questions?
We are here to help.
Contact us at:



sales@altelix.com



USA & Canada: 866-660-9434
International: +1 561-660-9434