



Enclosure Wall Mounting Guide

Model: NP151005 Series



WARNING: INSTALLATION OF THIS PRODUCT NEAR POWERLINES IS DANGEROUS. FOR YOUR SAFETY, FOLLOW THE INSTALLATION DIRECTIONS

Under some conditions, this enclosure may not prevent electrocution. Users should keep enclosure away from any overhead wires. If enclosure contacts a power line, any initial protection could fail at any time. IF ENCLOSURE NEARS ANY OVERHEAD WIRES, IMMEDIATELY LET GO, STAY AWAY, AND CALL UTILITY COMPANY

THIS ENCLOSURE IS DESIGNED TO BE INSTALLED ONLY BY A TRAINED PROFESSIONAL INSTALLER

Warning: To avoid electric shock, grounding must be installed by the installer as part of the installation. The unit must be grounded and installed in accordance with National Electrical Codes (NEC) and any local codes. Note that non-metallic enclosures do not provide grounding between conduit connections.

Warning: Enclosure must be secured when energized to prevent unauthorized access and shock hazard.

Important: Look over the site before beginning installation, and anticipate possible hazards. Select a safe site to install the enclosure.

If you have power lines in the area, call your local electric utility for assistance.

NEVER work alone; always have someone near who can summon help. Check weather conditions. Be sure that the area is not slippery and make sure that rain or thunderstorms are not predicted for the day you install the enclosure. If you need to use a ladder, make sure it is made of non-conductive (non-metallic) material.

Enclosures improperly installed or installed to an inadequate structure are susceptible to wind damage that can be very serious or even life threatening. Ensure that the installation is properly grounded. Ensure that the enclosure is properly secured and structurally sound to support all loads (weight, wind & ice).

Rooftop Installation Warning

DO NOT assume that just because you're on a roof, you're isolated from ground. You may still be electrocuted or fall off the roof.

Altelix enclosures feature rugged Polycarbonate+ABS, Fiberglass Reinforced Polyester (FRP) or Steel construction.

Options include Powered Models, Ventilation, Thermostat controlled Cooling and Heating, Insulated Models, DIN Rail Models and Pole Mount Models.

Turnkey models such as Audio/Video Enclosures, Weatherproof Phone Boxes and 19" Rack Mount Enclosures are also available.

Custom Product Inquiries or Technical Questions?

We are here to help. Contact us at:



sales@altelix.com



USA & Canada: 866-660-9434
International: +1 561-660-9434



Visit us at www.ALTELIX.com

Page-2

To wall mount the NP15 series enclosures, (1) external mounting tab is provided on the rear of the enclosure. For better security, they can also be mounted using the (4) internal mounting feet.

The mounting kit Included with the enclosure includes (4) Rubber Sealing Washers and (4) Screws with Wall Anchors.



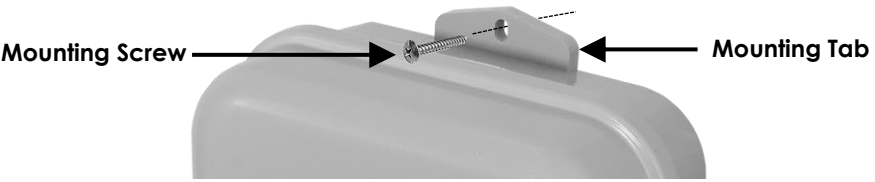
Rubber Sealing Washers



Mounting Screws with Wall Anchors

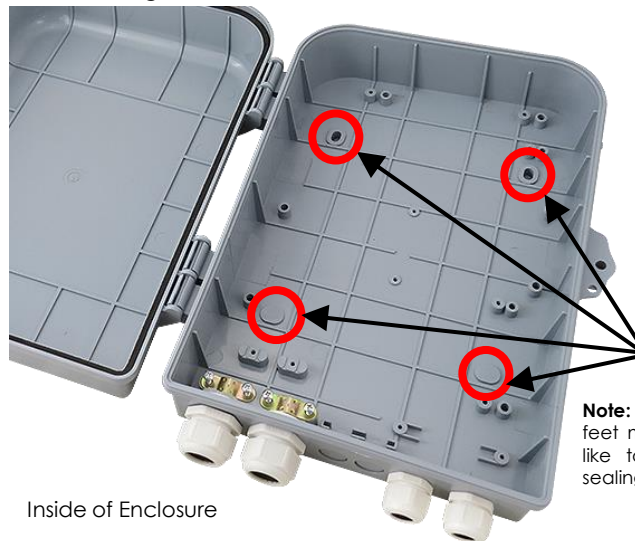
Using Mounting Tab

The enclosure can be secured to the wall using the mounting screws included in the kit. Install wall anchors as required.



Using Internal Mounting Feet

Step 1 - Using a 1/4" drill bit, drill (4) holes through the center of the mounting feet in the locations shown.



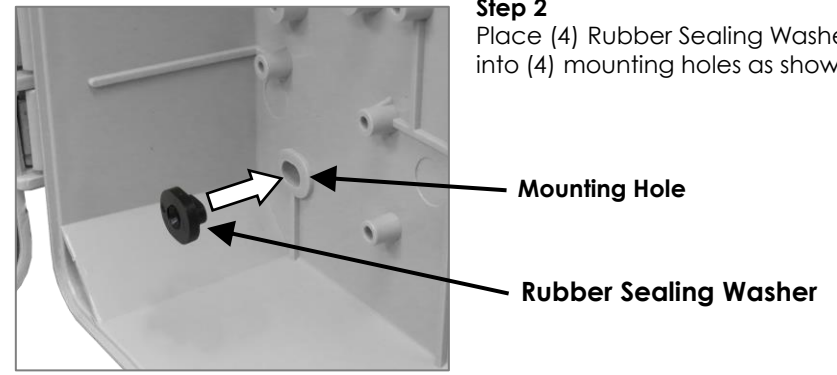
Mounting Feet Drill Locations

Note: Bottom two mounting feet must be drilled out wider like top feet so the rubber sealing washers can be used.

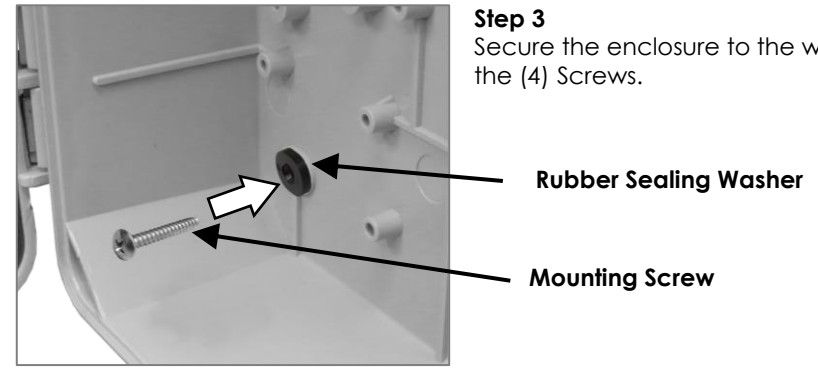
Inside of Enclosure

Page-3

Step 2 Place (4) Rubber Sealing Washers into (4) mounting holes as shown.



Step 3 Secure the enclosure to the wall using the (4) Screws.



Step 4 When mounting the enclosure, ensure the rubber sealing washers completely cover the enclosure mounting holes to provide a water-tight seal. Silicone sealant can also be added to enhance the seal.



Got Questions?
We are here to help.
Contact us at:



sales@altelix.com
USA & Canada: 866-660-9434
International: +1 561-660-9434