

Installing the Marantz Model M1

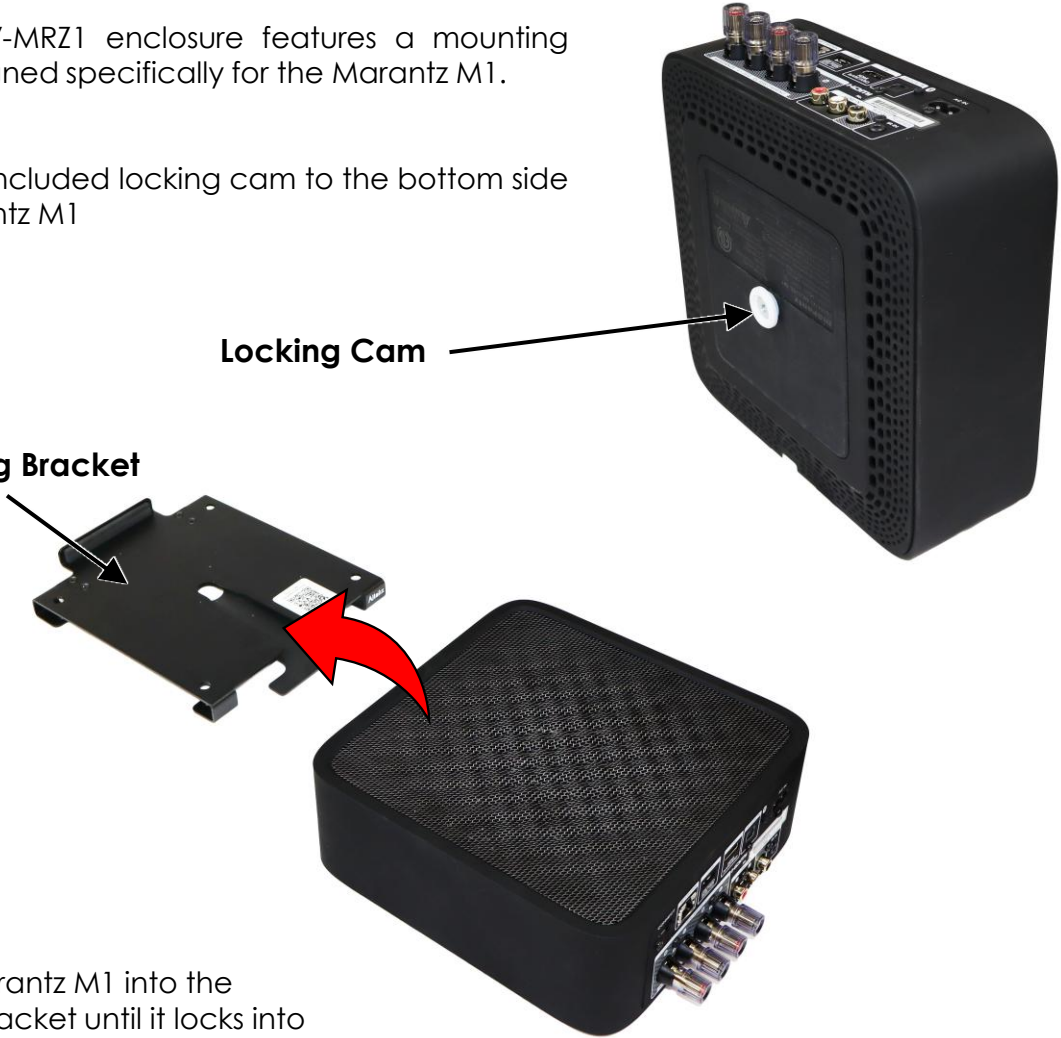
The NP17AV-MRZ1 enclosure features a mounting system designed specifically for the Marantz M1.

Step 1:

Attach the included locking cam to the bottom side of the Marantz M1

Mounting Bracket

Locking Cam



Step 2:

Slide the Marantz M1 into the mounting bracket until it locks into place

Release Tab



To remove, press tab to release the Marantz M1 and slide out.

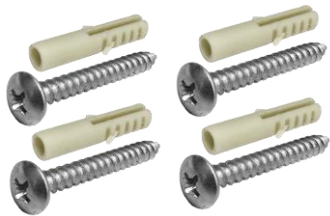
NP17AV Series Wall Mounting Guide

The NP17AV series enclosures feature four external mounting feet for mounting the enclosure.

For more secure installations, internal mounting points are provided. These mounting points will need to be drilled out in order to wall mount the enclosure.

To use the internal mounting points, using a 1/4" drill bit, drill through the enclosure as required.

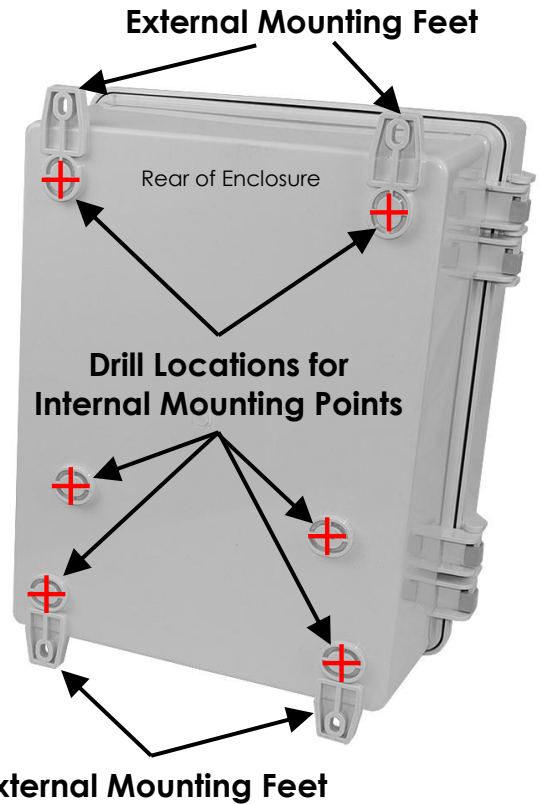
The mounting kit Included with the enclosure includes (4) Rubber Sealing Washers and (4) Screws with Wall Anchors.



Screws and Wall Anchors



Rubber Sealing Washers



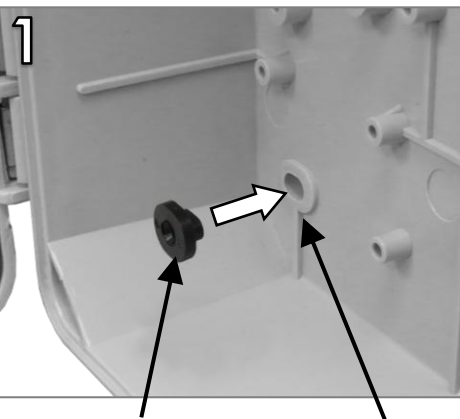
Mounting the Enclosure Using Internal Mounting Points

Step 1

Place (4) Rubber Sealing Washers into (4) mounting holes as shown.

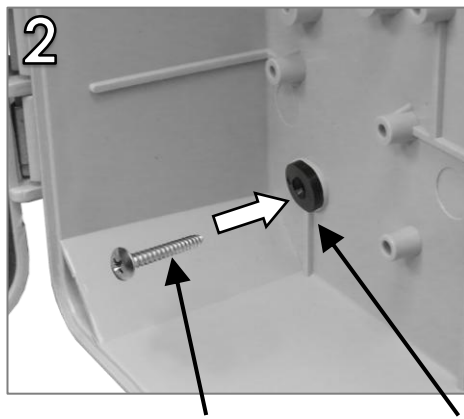
Step 2

Secure the enclosure to the wall using the (4) Screws.



Rubber Sealing Washer

Mounting Hole



Mounting Screw

Rubber Sealing Washer



Step 3

When mounting the enclosure, ensure the rubber sealing washers completely cover the enclosure mounting holes to provide a water-tight seal. Silicone sealant can also be added to enhance the seal.



WARNING: INSTALLATION OF THIS PRODUCT NEAR POWERLINES IS DANGEROUS. FOR YOUR SAFETY, FOLLOW THE INSTALLATION DIRECTIONS

Under some conditions, this enclosure may not prevent electrocution. Users should keep enclosure away from any overhead wires. If enclosure contacts a power line, any initial protection could fail at any time. **IF ENCLOSURE NEARS ANY OVERHEAD WIRES, IMMEDIATELY LET GO, STAY AWAY, AND CALL UTILITY COMPANY**

THIS ENCLOSURE IS DESIGNED TO BE INSTALLED ONLY BY A TRAINED PROFESSIONAL INSTALLER

Warning: To avoid electric shock, grounding must be installed by the installer as part of the installation. The unit must be grounded and installed in accordance with National Electrical Codes (NEC) and any local codes. Note that non-metallic enclosures do not provide grounding between conduit connections.

Warning: Enclosure must be secured when energized to prevent unauthorized access and shock hazard.

Important: Look over the site before beginning installation, and anticipate possible hazards.

Select a safe site to install the enclosure.

If you have power lines in the area, call your local electric utility for assistance.

NEVER work alone; always have someone near who can summon help.

Check weather conditions. Be sure that the area is not slippery and make sure that rain or thunderstorms are not predicted for the day you install the enclosure.

If you need to use a ladder, make sure it is made of non-conductive (non-metallic) material

Enclosures improperly installed or installed to an inadequate structure are susceptible to wind damage that can be very serious or even life threatening. Ensure that the installation is properly grounded. Ensure that the enclosure is properly secured and structurally sound to support all loads (weight, wind & ice).

Rooftop Installation Warning

DO NOT assume that just because you're on a roof, you're isolated from ground. You may still be electrocuted or fall off the roof.

Altelix LLC USA: 866-660-WIFI (9434) International: +1 561-660-9434 sales@altelix.com www.altelix.com

Copyright (C) 2025 Altelix LLC. All rights reserved. Altelix and the Altelix logo are Trademarks and/or Registered Trademarks of Altelix LLC.

Specifications are subject to change without notice. See www.altelix.com for most current information