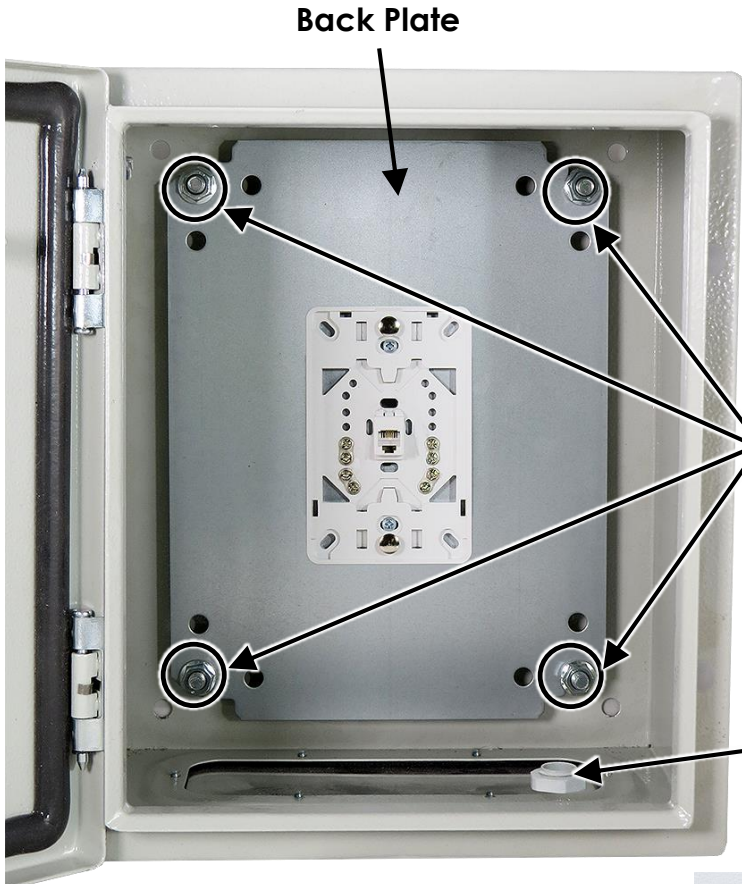


Wiring



Back Plate

1. Remove the (4) nuts securing the back plate.

Back Plate Nuts (4)

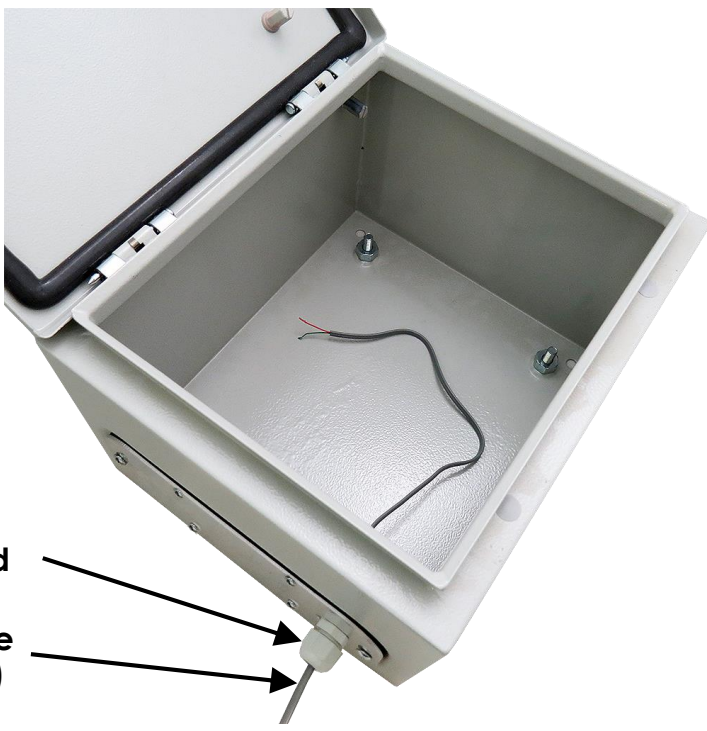
2. Install cable gland into access panel.

Cable Gland

3. Once the back plate is removed, feed the phone cable through the cable gland and into the phone box.

Installation Note:

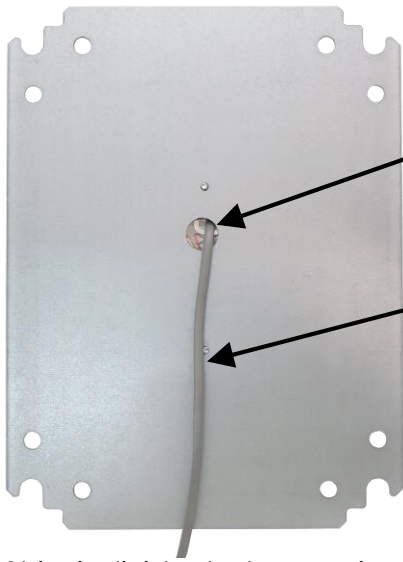
Do not over tighten cable gland. For installations that require better protection from water we recommend sealing gland with silicone.



Cable Gland

Phone Cable (not included)

Backside of Back Plate



Cable Access Hole

Phone Cable
(not included)

4. Run the phone cable behind the back plate and up through access hole to the back of the RJ11 phone jack.

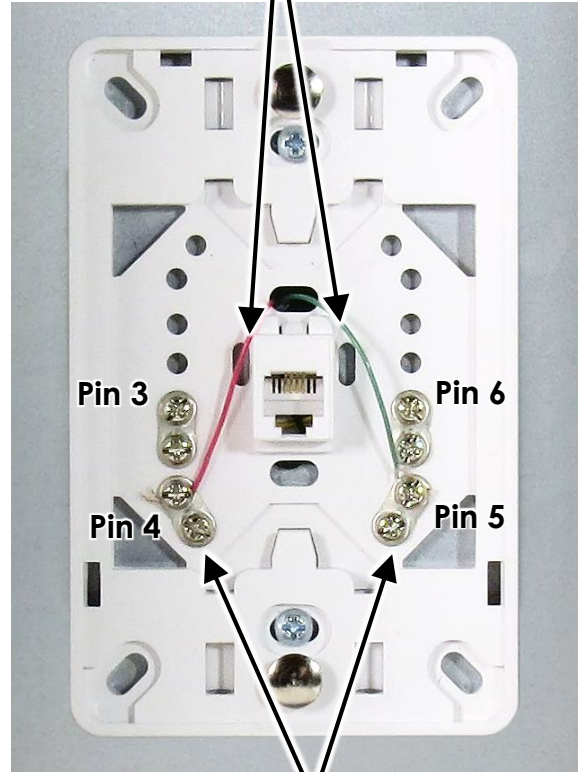
5. Strip individual phone wires as required and attach to screw terminals as shown. See below for jack pinout:

Pin Number	Wire Lead Color
3	Black
4	Red
5	Green
6	Yellow

Note: Standard telephone lines will typically use pins 4 & 5.

Phone Cable Wires
(not included)

Front of Phone Jack



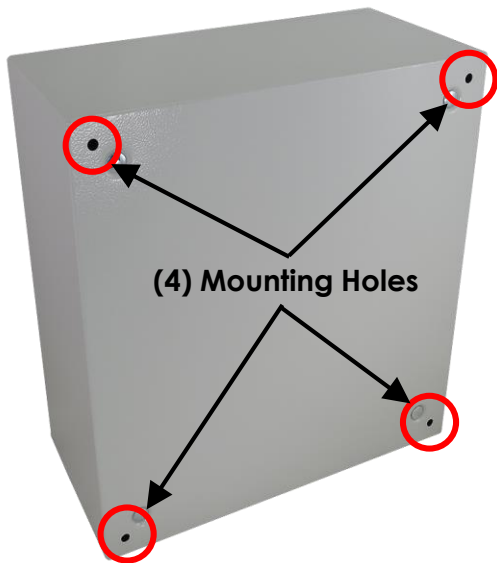
Screw Terminals

6. Secure back plate to the box using the (4) nuts ensuring phone cable is beneath the plate.
7. Install phone jack cover by snapping into place.



Phone Jack Cover

Mounting



Wall Mounting:

For wall mounting (4) 5/16" (8mm) diameter holes are provided on the rear of the enclosure.

Optional Pole Mount Kits

The optional NMKS-S250-08 and NMKX-S250-08 pole mount kits are designed to easily attach to the rear of the phone box. They are available on the Altelix website, www.ALTELIX.com



**NMKX-S250-08
Pole Mount Kit**

Got Questions?
We are here to help.
Contact us at:



sales@altelix.com



USA & Canada Customers: 866-660-9434
International Customers: +1 561-660-9434

Altelix LLC USA: 866-660-WIFI (9434) International: +1 561-660-9434 sales@altelix.com www.altelix.com

Copyright (C) 2017 Altelix LLC. All rights reserved. Altelix and the Altelix logo are Trademarks and/or Registered Trademarks of Altelix LLC.

Specifications are subject to change without notice. See www.altelix.com for most current information

WARNING: INSTALLATION OF THIS PRODUCT NEAR POWERLINES IS DANGEROUS. FOR YOUR SAFETY, FOLLOW THE INSTALLATION DIRECTIONS



Under some conditions, this enclosure may not prevent electrocution. Users should keep enclosure away from any overhead wires. If enclosure contacts a power line, any initial protection could fail at any time. IF ENCLOSURE NEARS ANY OVERHEAD WIRES, IMMEDIATELY LET GO, STAY AWAY, AND CALL UTILITY COMPANY

THIS ENCLOSURE IS DESIGNED TO BE INSTALLED ONLY BY A TRAINED PROFESSIONAL INSTALLER

Warning: To avoid electric shock, grounding must be installed by the installer as part of the installation. The unit must be grounded and installed in accordance with National Electrical Codes (NEC) and any local codes. Note that non-metallic enclosures do not provide grounding between conduit connections.

Warning: Enclosure must be secured using a pad-lock when energized to prevent unauthorized access and shock hazard.

Important: Look over the site before beginning installation, and anticipate possible hazards. Select a safe site to install the enclosure.

If you have power lines in the area, call your local electric utility for assistance.

NEVER work alone; always have someone near who can summon help.

Check weather conditions. Be sure that the area is not slippery and make sure that rain or thunderstorms are not predicted for the day you install the enclosure.

If you need to use a ladder, make sure it is made of non-conductive (non-metallic) material.

Enclosures improperly installed or installed to an inadequate structure are susceptible to wind damage that can be very serious or even life threatening. Ensure that the installation is properly grounded. Ensure that the enclosure is properly secured and structurally sound to support all loads (weight, wind & ice).

Rooftop Installation Warning

DO NOT assume that just because you're on a roof, you're isolated from ground. You may still be electrocuted or fall off the roof.

Altelix LLC USA: 866-660-WIFI (9434) International: +1 561-660-9434 sales@altelix.com www.altelix.com

Copyright (C) 2017 Altelix LLC. All rights reserved. Altelix and the Altelix logo are Trademarks and/or Registered Trademarks of Altelix LLC.

Specifications are subject to change without notice. See www.altelix.com for most current information